

# The Time Place

#62

INDONESIA



**CARTIER**  
An Updated  
Classic

**ZENITH**  
Challenging  
Conventions

**Tory  
Burch**  
Fashion  
Kaleidoscope

**Valentino**  
Style  
Statement

Bell  
& Ross  
Vintage  
Vibe

**HERITAGE  
SERIES**  
**Hamilton**  
Power of  
Invention

**SIHH 2018**

A close-up, artistic photograph of a watch movement. The watch is housed in a vibrant red, cushion-shaped case. The movement is intricate, with various gears, plates, and jewels visible. The lighting is dramatic, highlighting the metallic textures and the precision of the craftsmanship. The background is dark, making the red case and the metallic parts of the movement stand out.

# *Cartier*

**DRIVE DE CARTIER  
MANUFACTURE MOVEMENT 1904 MC MOONPHASES**

THE DRIVE DE CARTIER COLLECTION IS ELEGANCE REDEFINED. THE SLEEK LINES OF THIS CUSHION-SHAPED WATCH CREATE A TRULY STYLISH PIECE, BROUGHT TO LIFE BY THE MAISON MANUFACTURE MOVEMENT 1904 MC, DISPLAYING THE MOONPHASES AT 6 O'CLOCK. ESTABLISHED IN 1847, CARTIER CREATES EXCEPTIONAL WATCHES THAT COMBINE DARING DESIGN AND WATCHMAKING SAVOIR-FAIRE.

**#WHATDRIVESYOU**

Boutiques - Jakarta - Plaza Indonesia - (021) 314 1916 - Plaza Senayan - (021) 572 5238  
Corners - Jakarta - The Time Place, Pacific Place - (021) 5140 2776  
Surabaya - The Time Place, Tunjungan Plaza 4 - (031) 532 7991





CARTIER

AUTOMATIC

SWISS MADE







HAPPY SPORT  
*Chopard*

PLAZA INDONESIA BOUTIQUE (021) 2992 4350  
THE TIME PLACE: Pacific Place (021) 5140 2776, Plaza Senayan (021) 572 5759,  
Tunjungan Plaza 4 Surabaya (031) 532 7991 – INTIME: Mal Bali Galeria (0361) 767 039,  
Senayan City (021) 7278 2181 – AUTHORIZED SERVICE CENTRE: (021) 2927 2780

[www.chopard.com](http://www.chopard.com)



When you endure and persevere, you learn the virtue of patience. That's what makes you our distinguished customer for more than 15 years. We thank you for that honor.

JAKARTA: Plaza Senayan, Plaza Indonesia, Pacific Place  
SURABAYA: Tunjungan Plaza IV

[www.thetimeplace.co.id](http://www.thetimeplace.co.id)  
f @thetimeplace





WHEN TIME IS ON MY SIDE,  
*That's My Finest Hour.*

**THE TIME PLACE**

The finest timepiece boutique celebrating the human spirit since 1999



**E**very New Year brings restored hope and optimism. After everything that transpired the previous year, we at The Time Place, are thankful for another year, for another opportunity to pursue our goals and do better.

Similarly, in haute horlogerie, this sentiment was showcased at the Salon International de la Haute Horlogerie 2018. Distinguished brands presented a wide array of new developments and innovations, including Piaget's Altiplano Ultimate Automatic 910P, the world's thinnest automatic watch, as well as A. Lange & Söhne's Triple Split. Also of note was the particular effort taken by some brands to attract new clientele, while others further proved their watchmaking mastery by showcasing significant improvements on their existing icons.

Cartier did just that with the Santos de Cartier as well as the Santos de Cartier Skeleton, which graces our cover. Now featuring the unique Cartier QuickSwitch system (patent pending) and SmartLink self-fitting technology (patent pending), the updated Santos de Cartier models are the Maison's way of providing loyal fans and watch aficionados unparalleled ease of use and comfort. Find out more about these ingenious advancements in "The Modern Timepiece".

The New Year also heralded new collections from notable fashion brands, including Valentino and REDValentino, which we are happy to say are now part of the Time International family. The Spring/Summer 2018 offerings of these sister brands, designed by Pierpaolo Piccioli, will soon be available in Indonesia with the reopening of their stores in Plaza Indonesia. Meanwhile, Tory Burch took inspiration from the works of British interior designer, David Nightingale Hicks, for her eponymous brand's latest collection.

This is just a glimpse of what we have in store for you this year. Grab a copy and stay abreast on the latest developments in haute horology, fashion and more with The Time Place Magazine.

A handwritten signature in black ink that reads "Irwan D Mussry".

**Irwan Danny Mussry**  
Editor-In-Chief and Publisher

  @irwanmussry



TO BREAK THE RULES,  
YOU MUST FIRST MASTER  
THEM.

THE VALLÉE DE JOUX. FOR MILLENNIA A HARSH,  
UNYIELDING ENVIRONMENT; AND SINCE 1875 THE  
HOME OF AUDEMARS PIGUET, IN THE VILLAGE OF  
LE BRASSUS. THE EARLY WATCHMAKERS WERE  
SHAPED HERE, IN AWE OF THE FORCE OF NATURE  
YET DRIVEN TO MASTER ITS MYSTERIES THROUGH  
THE COMPLEX MECHANICS OF THEIR CRAFT. STILL  
TODAY THIS PIONEERING SPIRIT INSPIRES US TO  
CONSTANTLY CHALLENGE THE CONVENTIONS OF  
FINE WATCHMAKING.



ROYAL OAK  
CHRONOGRAPH  
IN STAINLESS STEEL

AUDEMARS PIGUET  
*Le Brassus*

THE TIME PLACE  
JAKARTA: PLAZA SENAYAN · PLAZA INDONESIA  
SURABAYA: TUNJUNGAN PLAZA 4



**MULYADI  
KURNIAWAN**  
Writer

A seasoned watch and jewellery writer who loves to travel and seek new adventures. Based in Jakarta, Indonesia, he comes from marketing and public relations, as well as a background in retail with more than a decade of professional experience.

---



**LISA JOHANNA  
KEEMINK**  
Writer

Bookworm, copy editor and budding watch nerd, Lisa spends most of her days working behind the computer or immersed in the latest fantasy novel. After 13 years of teaching, her foray into media stirred a sense of wanderlust that has her ready and eager to travel to different parts of the world. Lisa is currently working as a watch journalist while serving as a copy editor for a Jakarta-based newspaper.

---



**RETTA OKTAVIANI  
SUPARLI**  
Writer

For Retta Oktaviani Suparli, writing has always been her passion. She worked for more than 7 years in the lifestyle media industry in Jakarta before jumping to the world of Public Relations. Cappuccino, books and travelling are three things she loves the most. When it comes to books, she enjoys historical fiction and biographies. Anne Frank is her role model on how to be a woman with a vision and see the world in different perspectives.

---



**ISWANTO SOERJANTO**  
Photographer

Iswanto has been spellbound by photography since he was eight years old. He used to watch latent images appear slowly on photographic paper while his father was printing in his darkroom. In 1988, he decided to study professional photography at the most prestigious Brooks Institute of Photography in Santa Barbara, California. He started his Jakarta-based commercial photography studio in 1990 and worked in the industry for more than 24 years until he recently decided to retire. He now devotes his time to abstract expressionism photography (nonfigurative) and lives between Jakarta and Bandung to do some artworks.

---



**DEBORAH ISKANDAR**  
Art Consultant

After working for a number of investment banks in Hong Kong and Jakarta, the American answered her calling in the art world. With more than 20 years' experience in the art trade under two of the world's preeminent auction houses, in 2013 she founded her own art advisory firm, ISA Art Advisory. It aims to aid buyers, sellers and collectors to approach art with ease and to build collections that will grow in value over time. She is also the Founder of Indonesian Luxury.



# IWC PILOT. ENGINEERED FOR ORIGINALS.



Join the conversation on  
#B\_ORIGINAL.

## Big Pilot's Watch Heritage.

**Ref. 5010:** Leaning heavily on the first Pilot's Watches and at the same time an original: like its illustrious predecessors, the latest Big Pilot's Watch Heritage masterfully combines precision technology with functional design. The largest calibre developed and built in IWC's workshops

builds up a seven-day power reserve in next to no time. The triangular index positioned below the chapter ring and the slender five-minute indices take the dial closer to the 1940 original. Small wonder, then, that the same thing goes for the watch as its owner: originality is all about character.

IWC. ENGINEERED FOR MEN.

Mechanical movement, Hand-wound, IWC-manufactured 52110 calibre, 7-day power reserve with display, Date display, Central hacking seconds, Soft-iron inner case for protection against magnetic fields, Glass secured against displacement by drop in air pressure, Water-resistant 6 bar, Diameter 46 mm, Calfskin strap by Santoni

Exclusively available at: **The Time Place** – Pacific Place (Jakarta), Plaza Indonesia (Jakarta), Plaza Senayan (Jakarta), Tunjungan Plaza (Surabaya) •

INTime - Senayan City (Jakarta)  
[www.iwc.com](http://www.iwc.com)

FOR MORE INFORMATION  
✉ [infosea@iwc.com](mailto:infosea@iwc.com)

FOLLOW US ON  [@iwcwatches\\_sea](https://www.instagram.com/iwcwatches_sea)

**IWC**  
SCHAFFHAUSEN



12



80



6 WELCOME NOTE

COVER FEATURE

30 CARTIER

Return of the Santos

FEATURES

20 ROLEX

22 BELL & ROSS

24 BREGUET

26 TAG HEUER

28 ZENITH

SIHH 2018

36 A. LANGE & SÖHNE

38 AUDEMARS PIGUET

42 BAUME & MERCIER

44 CARTIER

46 IWC

50 JAEGER-LECOULTRE

52 PANERAI

54 PIAGET

56 ROGER DUBUIS

60 ULYSSE NARDIN

62 VACHERON  
CONSTANTIN

PHOTO SHOOT

64 ELEMENTS OF TIME

Fine watches with singular features

THE HERITAGE SERIES

72 HAMILTON

Delivering Precision

HIGH LIVING

78 VALENTINO

Welcoming Spring and Summer

80 CHANEL

A Timely Tribute

82 BERLUTI

Fresh for 2018

The  
**Time Place 62**  
INDONESIA



30

84 FENDI

Tropical Vibe

86 REDVALENTINO

Celebrating Multiplicity

88 TORY BURCH

Inspired by Design

90 MERCEDES-BENZ

The new E-Class

92 ART

Start of the 2018 Art Season

REGULAR COLUMNS

12 SOCIETY

14 INDUSTRY NEWS

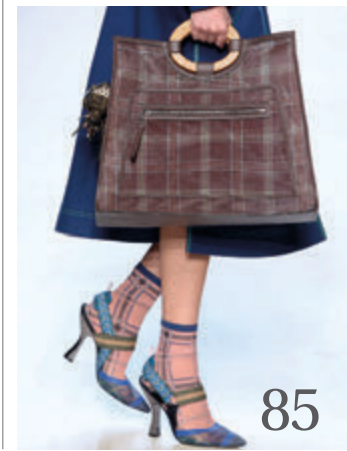
94 CELEBRITIES



88



82



85

**The Time Place Magazine, Edition 62**

All rights reserved, copyright 2018 by PT Komunikasi Perkasa International  
Reproduction in whole or part without permission is prohibited

**Editor-in-Chief and Publisher:** Irwan Danny Mussyri

**Chief Editorial Advisor:** Shannon Hartono

**Managing Editor:** Maria Zarah Gregorio Viado

**Senior Writer:** Mulyadi Kurniawan

**Sales Manager:** Adhika Wicaksana

**Production Manager:** Illona Vania

**Production Coordinator:** Erika Tania

**Circulation & Distribution Coordinator:** Shirley Manurung

**Contributors:** Deborah Iskandar, Denverino Dante, Iswanto Soerjanto,  
Lisa Johanna Keemink, Retta Oktaviani Suparli

**Art Director:** Noni Soeparman

**For Advertising Inquiries:**

Please contact **Adhika Wicaksana** at [adhika.wicaksana@time.co.id](mailto:adhika.wicaksana@time.co.id) or +62 21 2927 2708  
To subscribe, please contact us at [subscribe-magazine@time.co.id](mailto:subscribe-magazine@time.co.id)  
Also read online at [www.thetimeplace.co.id/thetimeplacemagazine](http://www.thetimeplace.co.id/thetimeplacemagazine)

**Printed by : PT. Printindo Utama**  
[info@printindo.net](mailto:info@printindo.net)

**The Time Place, Plaza Senayan:**

Plaza Senayan, Level 1 #122 B, Jakarta, Tel: +62 21 572 5759

**The Time Place, Plaza Indonesia:**

Plaza Indonesia, Level 1 #165, Jakarta, Tel: +62 21 310 7715

**The Time Place, Pacific Place:**

Pacific Place, Ground Floor #12A-B, Jakarta, Tel: +62 21 5140 2776

**The Time Place, Tunjungan Plaza 4:**

Tunjungan Plaza 4, Level UG # 14-16, Surabaya, Tel: +62 31 532 7991

**Rolex by The Time Place:**

Plaza Indonesia, Level 1 #69-70A, Jakarta, Tel: +62 21 2992 3982

The Shoppes at Marina Bay Sands B2 - 211/214, Singapore,

Tel: +65 6688 7211

[www.thetimeplace.co.id](http://www.thetimeplace.co.id)

Follow us on

TheTimePlace TheTimePlace TheTimePlace  
 TheTimePlaceMagazine



We assemble every single watch twice.  
Because perfection takes time.



**A. LANGE & SÖHNE**  
GLASHÜTTE I/SA

For us, perfection is a matter of principle. This is why, on principle, we craft all timepieces with the same care and assemble each watch twice. Thus, after the SAXONIA DUAL TIME has been assembled for the first time and precisely adjusted, it is taken apart again. The movement

parts are cleaned and decorated by hand with finishing and polishing techniques, followed by the final assembly procedure. This assures long-term functional integrity and the immaculacy of all artisanal finishes. Even if this takes a little more time. [www.alange-soehne.com](http://www.alange-soehne.com)



## A Fine Affair

The LAFLO Showroom, in collaboration with The Time Place, was the appointed partner and venue for a gathering celebrating The Time Place's "My Finest Hour" campaign. A unique initiative to highlight the importance of time in our lives, "My Finest Hour" showcases some of Indonesia's movers and shakers and the different ways they spend their free time. The esteemed personalities who graced the event, including those featured in the campaign, were treated to a special viewing of "My Finest Hour" portraits while enjoying cocktails. This was followed by a dinner buffet exclusively prepared for the occasion.



1. Irwan Danny Mussry, Rossa, Yuni Shara & Maruli Tampubolon 2. Ferdy Hasan & Safina Ferdy 3. Peter Wongso, Samuel Wongso & Susana Abadi 4. Florianti Sjaaf, Ted Sulisto, Katarina Gumulya, Alwi Sjaaf & Floriani Sjaaf 5. Dr. Lie Darmawan.





6. Adrianus Eka Putra, Sherlinda Caecillia, Claudia Novira, Jason Sentanu & Eric Sentanu 7. Christian Sugiono 8. Christina Lim 9. Dedy Then, Derrick Sukamto & Steven Kwan 10. Rifat Sungkar 11. Addie MS 12. Indra Priawan Djokosoetono.





Stephen Fung, Georges Kern, Yang Shuo and Ji-Sung

# LEGENDARY

## Future

BREITLING DEBUTS ITS NEWEST CHRONOGRAPH IN SHANGHAI

Swiss luxury watchmaker Breitling recently brought its venerated brand of horology to Asia in an exclusive unveiling of its newest chronograph that also paid tribute to the brand's illustrious past.

The glittering red-carpet gala, held in Shanghai, China last January, served as a starting point for Breitling's international 2018 Spring Roadshow dubbed #legendaryfuture - so

called to describe the brand's vision and mission moving forward.

And while the banquet-style event centred around Breitling's latest horological feat, the Navitimer 8, it also celebrated a rich 134-year history of watchmaking started by businessman-cum-watchmaker Léon Breitling. Breitling Chief Executive Officer Georges Kern himself was on hand to greet



Navitimer 8 Automatic Blacksteel with black dial and black leather strap





At the Navitimer 8 Roadshow with Breitling CEO Georges Kern and watch collector Fred Mandelbaum on stage



Navitimer 8 B01 with black dial and black alligator strap

the more than 300 guests in attendance, who had travelled from across the region – including Greater China, Japan, South Korea and several Southeast Asian countries – for a personal, inside look at a “Legendary Future.” “I am very proud that tonight we will unveil the new Navitimer 8 collection, which is a salute to the brand’s innovations and accomplishments in the pioneering days of aviation,” Kern said in his opening speech.

His audience that evening comprised not only horology enthusiasts from across the world, but also some of Asia’s renowned entertainers, in-

cluding Chinese actor Yang Shuo, South Korean actor Ji-Sung, Miss Universe China Diana Xu and Chinese actor and director Stephen Fung.

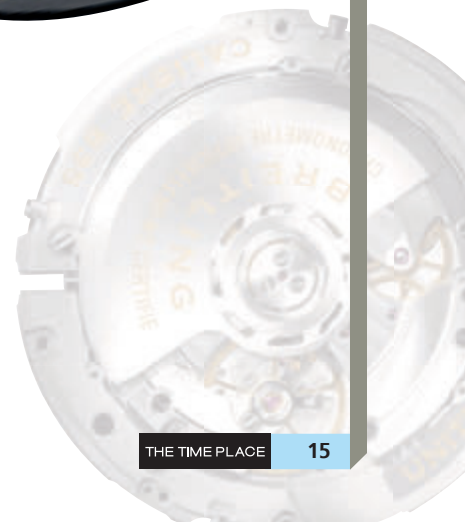
The proceeding portion of the event took the form of an immersive exhibition detailing Breitling’s journey from an ambitious watchmaker in Saint-Imier to a globally respected manufacturer of finely crafted timepieces. Guests were given the chance to explore defining innovations, designs and industry firsts that cemented Breitling’s place in modern horology through engaging displays and an array of interactive activities.

Among these, of course, was the Navitimer 8 chronograph, designed and created as an homage to the late Willy Breitling, who led the company from 1932 (at the tender age of 19) to 1979, and founded its Huit Aviation Department in 1938.

A unique part of the comprehensive showcase was a curated collection by chronograph collector Fred Mandelbaum, who had brought with him 60 vintage timepieces from his extensive collection. Mandelbaum and his classic watches are set to follow Breitling’s “Legendary Future” roadshow to its next destinations: Zurich, Switzerland, and then New York in the United States.



Breitling  
Manufacture  
Calibre 01







Big Bang Meca-10 in King Gold

# TRUE Blue

All blue  
appeal of  
the Big Bang  
Meca-10 Blue  
Ceramic

HUBLLOT PRESENTS A TIMEPIECE  
THAT REFLECTS ITS PROWESS IN  
FINE WATCHMAKING

**R**oyal blue is often associated with freedom, intuition, imagination, inspiration, as well as depth, confidence, and intelligence. These virtues could not be truer in Hublot's newest Big Bang Meca-10 Blue Ceramic watch that combines cutting edge materials, Swiss fine engineering, and Hublot's depth and savoir-faire in watchmaking.

As the name suggests, blue is literally all over the timepiece. The 45 mm ceramic blue case, bezel and folding clasp are made of high-tech ceramic - zirconium dioxide with high temperature sintering. Very hard and solid, yet lighter than steel, it resists scratches and ageing. The modern and distinctive Big Bang Meca-10 Blue Ceramic represents the brand's defining concept - The Art of Fusion.

The Meca-10 was first introduced at Baselworld 2016; it was widely praised for the design and execution of its ingenious 10-day power reserve calibre. With its unusual architecture designed around a construction set, the watch features a stylised skeleton dial that reveals the cogwheel power reserve indicator. The mechanics are also as impressive as the construction; it was developed over a period of two years. The manual-wound HUB1201 skeleton movement has two barrels parallel to the power reserve indicator: a cogwheel system with two rakes sliding along a horizontal axis.

On the dial, an opening at 3 o'clock shows a contrasting red dot when the movement is slowly running out of power, while a gear-wheel at 6 o'clock indicates the exact number

of days remaining and the regulating organ, coupled with the small second regulator, can be seen at 7 o'clock. Ricardo Guadalupe, CEO of Hublot, believes the Meca-10 is a reflection of Hublot's essence, "Made at our modern and perfectly integrated factory, the Big Bang Meca-10 demonstrates the complete mastery we have of our industrial resources, from R&D to the creation of calibres, high-tech cases, and innovative materials."

The Hublot Big Bang Meca-10 Blue Ceramic comes with a matching vibrant royal blue and black structured rubber strap. Also available in the Hublot signature King Gold, this version combines the warmth and radiance of red gold and the depth of the matt blue skeleton dial. The same 45 mm case is made of micro-blasted 18-carat King Gold, likewise for the bezel.



Cogwheel power reserve indicator of the model



Assembling the timepiece



# HUBLOT



AVAILABLE AT:

## THE TIME PLACE

**PLAZA INDONESIA** Level 1 No. 165-168  
Jl. MH. Thamrin Kav. 28-30 Jakarta  
Tel: +62 21 310 77 15

**PLAZA SENAYAN** Level 1 No. 125B  
Jl. Asia Afrika No. 8 Jakarta  
Tel: +62 21 572 57 59

**PACIFIC PLACE** Ground Floor Unit 12A-B  
Jl. Jend. Sudirman Kav. 52-53 Jakarta  
Tel: +62 21 5140 27 76

**Big Bang Unico.**  
UNICO column-wheel chronograph.  
In-house Hublot movement. 72-hour  
power reserve. Case crafted in a new  
red gold alloy: King Gold, with  
ceramic bezel. Interchangeable  
strap by a unique attachment.



Chopard's Ice Cube collection makes a fashion comeback

# COOL as Ice

AYMELINE VALADE IS THE NEW FACE OF CHOPARD'S MINIMALIST JEWELLERY COLLECTION

Nearly 20 years have passed since luxury jeweller and watchmaker Chopard unveiled its Ice Cube collection, and the minimalist accessories continue to charm both fashion fans and industry stakeholders worldwide. In its newest iteration, the line is gaining a new generation of admirers with the help of French model and actress Aymeline Valade, who lent her image and talent as Artistic Director for the latest Ice Cube campaign.

The inaugural collection, launched in 1999, was inspired by the simple yet alluring geometric configuration of ice cubes. It emphasised the beauty of simplicity through a range of contemporary accessories – comprising rings, earrings, bracelets (wearable as anklets) and necklaces – that were sleek, sophisticated and above all, wearable. This minimalist and functional approach to accessorising was part of what drew Valade to the line. When asked what she likes most about Ice Cube, she re-



plied, “Its simplicity. It goes with my look, while being cool and chic at the same time.”

The world of haute couture is no stranger to Valade’s unique “look.” Hailed by British Vogue as the rising star “we’ve got our eyes on,” the 33-year-old appeared in her first runway show



in 2011, instantly turning heads with her cool, androgynous features and strong presence. She has since carved a name for herself in the industry as the quintessential French fashionista: chic, confident and unpretentious.

Her addition to Chopard's latest Ice Cube campaign, therefore, seemed like fashion kismet – a seamless pairing of two strong contemporary figures with their own distinctive styles. And with the keen eye of photographer Zachary Hendley behind the lens, the campaign came to life in a photoshoot led and styled by Valade herself.

The Montpellier native strikes one effortless pose after another in a series of photographs that are simple yet striking – very much like her own personality and the jewellery she wears. Valade can be seen wearing a combination of Ice Cube pieces – including stacked rings – in a



Aymeline Valade wearing select Ice Cube pieces

mix and match approach that perfectly shows off the collection's elegant functionality.

“The great thing about this collection is that the very minimalism of its design makes it work with just about anything,” Valade explained. “So, you can dress for the day or the evening and simply keep the same jewellery on throughout – or adjust it by adding a piece or two for the evening.”

She does exactly that in the photoshoot, wearing a number of diamond-set rings in both yellow and white gold, admitting that these pieces are her favourites, “Because the more you stack them, the more you can play with different combinations. It feels great to have a collection of them on your fingers,” Valade adds.





Rolex Oyster Perpetual Sky-Dweller in yellow Rolesor

# FOR WORLD Travellers

ROLEX INTRODUCES AN  
UPDATED CLASSIC AVAILABLE  
IN TWO EXQUISITE VERSIONS

**W**hen it comes to travel must-haves, a resilient watch which can be worn anywhere and anytime, should be on top of any globetrotter's list. Enter the Rolex Oyster Perpetual Sky-Dweller, the renowned brand's classic world traveller watch. Equipped with a second time zone function and Superlative Chronometer certification, it is a beautiful and useful accessory to possess.

Now available in two timelessly elegant versions, the Rolex Oyster Perpetual Sky-Dweller provides singular time-telling performance on the wrist. For the first time, Rolex renders its popular watch in yellow or white Rolesor, a combination of 904L steel and 18 ct yellow or white gold. This commanding blend of steel and gold affords this sophisticated timepiece unique appeal, and with the robustness of the waterproof Oyster case, optimum protection is provided, setting



Rolex Oyster Perpetual Sky-Dweller in white Rolesor





The rotatable Ring Command bezel lets the wearer easily set the watch's functions

a sultry foundation on which other updates are added. These include improvements in the dial such as rectangular index hour markers and longer hands, while the addition of a Chromalight display with long-lasting luminescence greatly enhances legibility.

More importantly, the Sky-Dweller features a dual time zone display, which is a truly useful function for frequent business travellers who regularly find themselves going to and from different countries. With this feature, the wearer can easily keep track of both home time and the current time in his location. Local or home time can be read using the centre hands while the reference time is displayed in a 24-hour format on a rotating off-centre disc on the dial; this is a particularly innovative annual calendar named Saros - after the astronomical phenomenon of the same name - that requires only one date adjustment a year. Apart from the time, the watch also displays the month and date; the former through 12 apertures that surround the dial, and the latter at 3 o'clock, enhanced by the iconic Cyclops lens for easy reading. To set its myriad of functions, the wearer only needs to use the innovative and patented rotatable Ring Command bezel of the simple to use yet sophisticated timepiece.

The Sky-Dweller is powered by the self-winding calibre 9001, which is entirely developed and manufactured by Rolex. Protected by seven patents, this movement is one of the most complex calibres created by the brand. Its oscillator is enhanced with a blue Parachrom hairspring patented and manufactured by Rolex in an exclusive alloy. Insensitive to magnetic fields, the Parachrom hairspring provides great stability when exposed to temperature variations and remains up to 10 times



Rectangular hour markers and longer hands, as well as Chromalight display, provide increased legibility

“  
THE YELLOW ROLESOR MODEL COMES WITH AN OYSTER BRACELET COMBINING 904L STEEL AND 18 CT YELLOW GOLD, WHILE THE WHITE ROLESOR MODEL IS COMPLETED WITH A SOLID-LINK OYSTER BRACELET IN 904L STEEL”

more precise than a traditional hairspring in case of shocks. The addition of a Rolex overcoil ensures that it retains regularity regardless of position. The calibre 9001 provides the watch up to 72 hours of power reserve.

The Sky-Dweller is fitted on a solid-link bracelet and equipped with the patented Easylink rapid extension system, which allows the wearer the ability to increase the bracelet length by approximately 5 mm, for additional comfort in any circumstance. The yellow Rolesor model comes with an Oyster bracelet combining 904L steel and 18 ct yellow gold, while the white Rolesor model is completed with a solid-link Oyster bracelet in 904L steel.

Both models are covered by the Superlative Chronometer certification redefined by Rolex in 2015. Symbolised by the green seal that comes with every Rolex timepiece, the Superlative Chronometer status is accompanied by an international five-year guarantee.

Exuding a vintage spirit, the BR V2-94 Steel Heritage is powered by the BR-CAL.301 movement



# MINIMALIST

## Retro

BELL & ROSS TAKES VINTAGE TO ANOTHER LEVEL

Two outstanding watches have been added to the Bell & Ross Heritage line, with aeronautical instruments remaining a main source of inspiration. These serve as the brand's ultimate points of refer-

ence regarding precision, legibility and reliability. The duo, namely BR V2-92 and BR V2-94 Steel Heritage, combines high performance with a retro spirit, a high value design the house is well known for.



The BR V2-94 features a 30-minute counter at 9 o'clock



BR V2-92  
Steel  
Heritage  
with rubber  
strap



The Heritage collection itself was launched in 2009 by Bell & Ross to highlight the key eras in aviation history. The collection unifies its models of varied forms and functions around a common concept. Square, round, three-hand or chronograph, they all share the characteristics of expressing the passage of time through colour and a patina that gives them a vintage look. Since the year of the collection's introduction, Bell & Ross has paid tribute to pocket watches from the Great War and to flight instruments from the 1940s. And yes, from then on, the watch has become an iconic model in the luxury watch market. Today, the Vintage collection is entering its third generation. The new models showcase the line's design evolution.

A Vintage spirit with the Heritage concept at its heart is what defines the BR V2-92 and BR V2-94 Steel Heritage. Inspired by instrument pan-

els from aircrafts of the 1960s, the new models measure time with precision whilst cultivating a resolutely retro look. The design of the dial itself is quite minimalistic.

These new versions keep the traditional sand-coloured 12, 3, 6 and 9 numerals and the iconic black dial. To elaborate on its technical specifications, what differentiates these two timepieces is the movement. The BR V2-92 is powered by BR-CAL.302, while the BR V2-94 Steel Heritage is powered by BR-CAL.301. Both come in 41 mm satin-polished steel cases, with push buttons and screw-down crowns to reinforce water-resistance. The watches are resistant to water up to a depth of 100 metres.

These Vintage Steel Heritage timepieces are available with satin-polished steel and black rubber straps. Rounded lugs complete the

“THE SAPPHIRE CRYSTAL WITH AN ULTRA-CURVED FINISH EVOKES THE STYLE OF FINE VINTAGE WATCHES AND ROUNDS OFF THE MINIMALIST RETRO OFFERINGS.”



The BR V2-94 Steel Heritage

new metal bracelets with fine links to ensure that the watches sit comfortably on any wrist. The sapphire crystal with an ultra-curved finish evokes the style of fine vintage watches and rounds off the minimalist retro offerings.



Express your love with the Breguet Classique Phase de Lune Dame

# LOVE Token

FORGET FLOWERS! CHECK OUT THE NEW BREGUET CLASSIQUE PHASE DE LUNE DAME WATCH FOR YOUR SPECIAL LADY

Romance should not just be celebrated on Valentine's Day; it should be lived every day. And if you are one of the lucky gentlemen who has found your one true love, then we have found the perfect token of love you can give your significant other. Meet the new Breguet Classique Phase de Lune Dame watch, a sure fire way to express your devotion, and set you apart from the regular flowers and chocolates-wielding average Joes!

The Classique Phase de Lune Dame was first introduced in 2016; for 2018, the bezel on the 30 mm 18-carat white gold case is adorned with subtly graded shades of diamonds and pink sapphires, while the lugs are graced with a setting of pink sapphires at 6 o'clock and diamonds at 12 o'clock. Complementing the colour motif is a satin-finished alligator leather strap, which also appears in graded shades of pink. The softness and lightness of the hue

does not stop there. The mother-of-pearl dial has white tones and iridescent shimmer which give the new Classique Phase de Lune Dame a cloud-like beauty and elegance.

The dial receives a poetic moon phase display at 6 o'clock. This feature is located on top of a lacquered pink "sky" backdrop, with the moon hiding from sight behind a pink mother-of-pearl heart; a small yet very feminine touch that any woman would appreciate. This special Valentine's Day edition also sports signature Breguet aesthetics such as the classic Roman numerals, the finely fluted case band, and the Breguet open-tipped hands in blued steel.

Powered by the self-winding Calibre 537L movement, which sports a silicon balance spring, the mechanism drives the moon phase indicator with small seconds, and provides the timepiece with a 45-hour power reserve. The movement is hand-finished, with Côtes de Genève engraving on the bridges and a barley-corn guilloché motif on the rotor, which is seen through a sapphire crystal case back.

The Breguet Classique Phase de Lune Dame is set with 53 pink sapphires totalling 0.99 carats and 13 brilliant-cut diamonds weighing 0.143 carats. The Valentine's Day special watch is a numbered limited edition of 14 pieces worldwide, a nod to the 14th day of February dedicated to all romantic souls.



A heavenly piece from the heart





# TAG Heuer

C O N N E C T E D



## #connectedtoeternity

TAG HEUER CONNECTED MODULAR  
FITS ALL WRISTS

now available in 45mm and 41mm



The TAG Heuer Connected Modular 45 and 41

# LUCKY

## Number 41

SPECIALLY REDESIGNED FOR SMALLER WRISTS, THE TAG HEUER CONNECTED MODULAR 41 IS AN ABSOLUTE CHARM

The Swiss brand TAG Heuer unveiled an incredibly innovative and stylish timepiece, the TAG Heuer Connected Modular 45, in March 2017, to the delight of watch fans all over the world. But if the original version of the watch is too big for your wrist, then it's time for you to eye its second generation model.

Unveiled at the pre-Baselworld Geneva Days 2018 held in January, the TAG Heuer Modular Connected 41, is perfect for slither wrists. Presented together with the novel creations of other LVMH watch Maisons such as Hublot and Zenith, the TAG Heuer Modular Connected 41 is not only smaller in size, but also less expensive. The new timepiece features a quick



The latest iteration of the TAG Heuer Modular Connected is available with a 41 diameter case

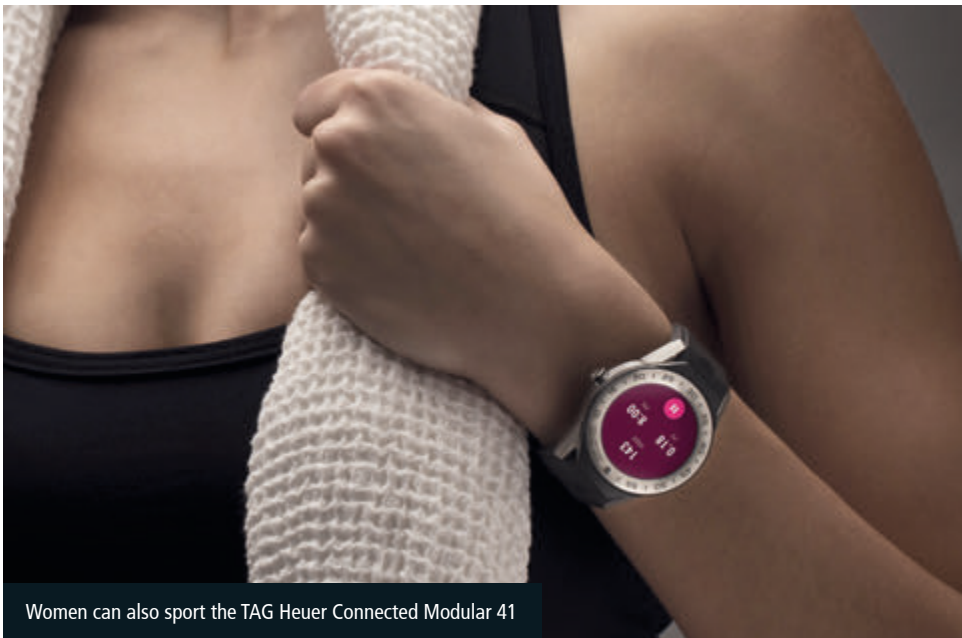


mechanism for changing from Android Wear to analog module and comes with either a silver steel or black ceramic bezel. A true highlight of this most recent unveiling from TAG Heuer is that the high-tech watch can be worn by both men and women.

The device features significant improvements in certain areas. One of the most prevalent is the watch's elegant diameter of 41 mm. Though slightly smaller than the original diameter, the 41 mm case remains substantial enough for masculine wearers, yet significantly pared down for feminine watch enthusiasts, making it just the right size for both sexes. This smartwatch is developed in collaboration with Intel and Google™, and features some enhancements made to the 45 mm series, such



Masculine yet perfect for slight wrists



Women can also sport the TAG Heuer Connected Modular 41

as the AMOLED 390x390 screen that offers 326 ppi resolution as well as improved brightness with a maximum of 350 nits. In addition, there are numerous customisable TAG Heuer dials available from the TAG Heuer Studio that will allow the wearer to make the timepiece truly his/her own. It doesn't stop there though, as the watch also has greater storage capacity, with an increase to 8 GB and a bigger RAM memory of 1 GB.

On the exterior's aesthetic, the TAG Heuer Connected Modular 41 has a truly sleek and modern design. It is available in seven standard models which are accompanied by customised straps and lugs. Pink, blue and white leather are three additional strap colours to the collection, rounding off the total strap offerings to nine. The connected module can still be replaced with a Calibre 5-three hand



The timepiece can be synced with Android or iPhones

“ A TRUE LUXURY, THE TAG HEUER CONNECTED MODULAR 41 IS DEDICATED TO THOSE WHO ADORE HIGH TECHNOLOGY WITHOUT SACRIFICING THE ESSENCE OF OPTIMUM SOPHISTICATED IN A WATCH ”

mechanical module allowing the connected watch to become an attractive mechanical watch in just a few clicks. Furthermore, this latest model shares all the unique functions of the Connected Modular 45.

Designed at TAG Heuer in Switzerland, this new smartwatch is also equipped with water resistance to 50 metres as well as a GPS and an NFC sensor enabling contactless payment via Android Pay™. Last but not the least, it is compatible with Android™ 4.4 phones and iOS 9 or later versions.

A true luxury, the TAG Heuer Connected Modular 41 is dedicated to those who adore high technology without sacrificing the essence of optimum sophistication in a watch. This is undoubtedly a bold watch with nothing less than maximum appeal.

Zenith Defy El Primero 21 Brushed Titanium with skeleton dial



Zenith Defy El Primero 21 Brushed Titanium with closed dial and rubber strap

# DEFYING All Odds

YOU CAN'T GO WRONG WITH THE DEFY EL PRIMERO 21 CHRONOGRAPH BRUSHED TITANIUM WATCHES

**W**hen it comes to high-precision chronographs, one name that truly stands out is Zenith. The brand has been creating highly accurate watches since 1969 with the introduction of the El Primero. At last year's Baselworld, the manufacture introduced the Defy El Primero

21 Chronograph and they stunned the horology world with its ability to measure up to 1/100th of a second! The Zenith Defy El Primero 21 quickly became a hit, not only for its performance, but also for its openworked design that lives up to its high-performing complication.

The Defy El Primero 21 Chronograph was introduced in a 44 mm grade 5 brushed titanium case. The skeletonised dial offers a remarkable view of the organs that allow for such chronometric performance, while also bearing the identifying characteristics of the legendary original: a star-tipped sweep-seconds hand, large luminescent baton-type hands and faceted hour-markers, all paying proud tribute while simultaneously offering a stunning demonstration of futuristic brilliance. The brushed titanium case provides characteristics includ-





Zenith Defy El Primero 21 Brushed Titanium Chronograph with rubber strap



Zenith Defy El Primero 21 Brushed Titanium with closed dial

ing being tough, lightweight, yet urbanly stylish, complementing the sporty nature of the watch. However, the piece is rugged enough to protect a high-precision calibre. The complex openworked dial comprises of different coloured counters: blue for the 30-minute counter at 3 o'clock and black for the 60-second counter at 6 o'clock, with a discreet small seconds counter at 9 o'clock. A chronograph power-reserve indicator is located at 12 o'clock, with rhodium-plated hour-markers and hands to complete the look.

Expanding the Defy El Primero 21 repertoire, Zenith also introduced a version that is a departure from the signature openworked dial, the supremely sophisticated silver-tone sunray "closed dial" version, paired with a gleaming brushed titanium case and bracelet. Dubbed the Zenith Defy El Primero 21 Brushed Titanium with Closed Dial, it features a timeless, elegant "Panda" dial with Zenith's signature aesthetics aplenty: a star-tipped sweep-seconds hand, large luminescent baton-type hands and faceted hour-markers. As the name sug-

“ BOTH VERSIONS OF THE DEFY EL PRIMERO 21 BRUSHED TITANIUM COME WITH A TITANIUM BRACELET TO MATCH THE CASE, OR A BLACK RUBBER STRAP FOR SPORTIER APPEAL ”

gests, the 44 mm case is made of brushed titanium but instead of a skeletonised dial, it possesses a normal closed dial, with a domed sapphire crystal on top, and a transparent one at the back. The silver-toned dial comes with a sunray motif, complete with three black-coloured chronograph counters that lend it its Panda moniker. The simple dial layout features

a power reserve indicator at 12 o'clock just under the Zenith insignia, a 30-minute counter at 3 o'clock, a 60-second counter at 6 o'clock, and a small seconds counter at 9 o'clock which rounds out the watch dial's symmetry.

Both versions of the Defy El Primero 21 Brushed Titanium come with a titanium bracelet to match the case, or a black rubber strap for sportier appeal. While the available strap options will not be the main selling point of the watch, its El Primero 9004 automatic calibre is. The new 1/100th of a second chronograph movement comes with the exclusive dynamic signature of one rotation per second, comprising of two escapement wheels: one for the normal watch function which runs at a highly-precise 5Hz, and another for the chronograph function which runs at a whopping 50Hz. The El Primero 9004 calibre is TIME LAB-Chronometer certified and it certainly sets the bar ultra-high for chronometric performances. Ultimately this is a challenge for Zenith itself, the unmatched parallel for precision chronographs in the industry.

Santos de  
Cartier  
Skeleton in  
steel



THE SANTOS DE  
CARTIER RECEIVES  
VERSATILE  
IMPROVEMENTS  
AND INNOVATIONS  
IN 2018

# *THE MODERN* Timepiece





Iconic elements of the original are retained in this new Santos de Cartier collection

In this day and age, one of the important accessories a majority of people opt to wear is a handy wristwatch. Even though the time of day can easily be checked and viewed on one's mobile phone, wearing a trusty timepiece is still a practice that most people adhere to. This was not the case in the late 19th and early 20th century. During that period, many people sported pocket watches and some of these were given leather straps to be worn over the wrist.

However, over time and due to increasing demand, watch manufacturers slowly began making purpose-built wristwatches. Notably, it was military men and aviators who first required watches that could provide them convenient access to the time. And what's more convenient than just looking at one's wrist? In 1901, this was the exact request of Alberto Santos-Dumont, a Brazilian aviation pioneer, to his friend, Louis Cartier. Santos-Dumont voiced out to the watchmaker that he was having difficulty checking the time on his pocket watch while he was in flight. This prompted the founder of Cartier to revolutionise watchmaking by inventing the first purpose-designed modern wristwatch. Aply named after Santos-Dumont, the Santos de Cartier has be-

“*APPLY NAMED AFTER SANTOS-DUMONT, THE SANTOS DE CARTIER HAS BECOME ONE OF CARTIER'S MOST POPULAR LINES, ONE THAT HAS EVOLVED THROUGH THE PASSAGE OF TIME*”

come one of Cartier's most popular lines, one that has evolved through the passage of time.

#### SINGULAR ELEMENTS

Apart from being the first modern wristwatch, the Santos de Cartier was also set apart because of its novel square shape and the eight screws on its bezel. The square shape is taken from the four angular corners of the Eiffel



A sultry pink gold Santos de Cartier with alligator skin strap



A variety of interchangeable straps now accompany the line



Tower, an expression of the symmetry of Parisian geometry of that era. While the eight screws, which actually serve a function, were revealed as a design element that paid tribute to the spread of mechanical steel structures that were synonymous with the improvements in urban architecture at the time. Fast forward to 2018 and these very elements are retained in this year's Santos de Cartier collection. The brand's design studios made the utmost effort to remain faithful to the iconic Santos aesthetic, while also providing intelligent proportions, and increasing the comfort afforded to the wearer.

One distinct change in Cartier's new offerings is an update on the watch bezel. Adopting sleeker lines, the new bezel design is in greater synergy to the lines of the case and the strap. This feature wonderfully highlights the stylistic dynamic of the timepiece. Another part of the watch that has received a substantial improvement is the watch strap.

A defining element in the Santos de Cartier, the strap was originally crafted in leather, which at that time was a novel material to use. Now, the timepiece is available with inter-



All steel model of the Santos de Cartier



Yellow gold Santos de Cartier

changeable watch straps and bracelets available in steel, gold, calfskin or alligator skin. But the improvements don't end with just strap selections and types. The Santos de Cartier now comes with the Cartier QuickSwitch system (patent pending). Hidden under the strap, this novel system allows the wearer to easily change watch straps. Melding seamlessly to the structure of the case, the wearer need only press the mechanism to activate it.



# Cartier

## MOMENTOUS MILESTONES

Cartier upholds excellent craftsmanship in fine watchmaking this year

### Rotonde de Cartier Skeleton Mysterious Double Tourbillon, Calibre 9465 MC

A worthy tribute to the first mystery clock and movement created in 1912 by Louis Cartier and watchmaker Maurice Coët, the Rotonde de Cartier Skeleton Mysterious Double Tourbillon is truly a sight to behold. On an opening in its attractive skeletonised dial, the mysterious double tourbillon provides the illusion of being suspended in mid-air, without anything visibly attaching it to the rest of the movement. The double flying tourbillon completes a rotation every 60 seconds, while its tourbillon cage does a second rotation for five minutes. This platinum beauty features chamfered bridges, drawn flanks and polished screw heads. Furthermore, skeletonised bridges in the form of Roman numerals enhance the watch's ethereal power and appeal. Crafted in platinum, the 45 mm timepiece is powered by the calibre 9465 MC which provides it with a minimum power reserve of 52 hours. It comes with a navy blue alligator skin strap and is offered in a limited edition of 30 numbered pieces.







## Révélation d'une Panthère watch

Though the Révélation d'une Panthère honours a tried and tested icon of Cartier – the panther – the timepiece exceeds all expectations when one takes a closer look at the dial. Because this panther can only be viewed with the movement of the wrist. Is it an illusion? Perhaps, but what it really expresses is the playful and innovating side of the maison. As many as 900 gold beads are suspended in viscous liquid and form a panther pattern only with the movement of the watch wearer. This seemingly magical and patented display can be seen on the rich green lacquer dial which is housed in an alluring 18-carat pink gold case set with 44 brilliant-cut diamonds. The 37 mm timepiece comes with apple-shaped hands and a shiny dark green alligator skin strap. A second strap in black alligator skin provides versatility to the singular watch. Limited to 100 pieces, the Révélation d'une Panthère is also available in red (a model similarly limited to 100 pieces) as well as an unlimited, but no less riveting, black version.





## **Panthère de Cartier pink gold triple-loop bracelet with paved case**

A product of the 80s, the Panthère de Cartier has become one of Cartier's most beloved and successful lines. Exuding timeless appeal, the Panthère de Cartier is renowned for its strong design aesthetic that has stood the test of time. The new timepiece retains elements of the original. Perfectly placed screws and a dazzling array of diamonds surround the dial which features elegant Roman numerals. The supple gold bracelet synonymous with the collection is now replaced by a longer model which can be looped two or three times around the wrist. Fans of the watch will delight in the various offerings which include iterations in yellow, pink and white gold. Undoubtedly a classic in the making, the new Panthère de Cartier is a worthy addition to the Cartier arsenal of jewellery and watches. This new piece triumphantly captures the true essence of femininity and sustains the timeless appeal of the much-coveted line.





## Santos de Cartier Skeleton

An important part of Cartier's stylistic heritage, the Santos watch created in 1904 receives updates for 2018. The new Santos de Cartier features the Cartier QuickSwitch system (patent pending), which allows the wearer to easily interchange straps. Choices include steel, gold, calfskin or alligator skin. The mechanism is positioned under the strap, deeming it invisible and allowing it to blend into the structure of the case; activation can be conveniently initiated by pressing on the mechanism. In addition, the watch also comes with the SmartLink self-fitting technology (patent pending) which adjusts the length of the metal bracelet to the nearest link without the requirement of a tool. The same new features grace the Santos de Cartier Skeleton, an 18-carat pink gold gem with skeletonised bridges in the shape of Roman numerals and steel sword-shaped hands with a pink gold finish. Calibre 9619 MC provides it with approximately 72 hours of power reserve.



# Clé de Cartier Straw Marquetry

A feast for the eyes, the Clé de Cartier Straw Marquetry timepiece exudes unparalleled elegance with its 18-carat pink gold case, set with brilliant-cut diamonds. But what makes this piece truly unique is the wonderful straw marquetry work featured on the watch dial. The panther, an iconic animal for Cartier, takes centre stage with its pear-shaped emerald eye. Straw, in place of wood veneer, is expertly assembled on a wood plate, after first choosing, cutting and positioning them according to the design. Created over the course of five days, the artisan combines the delicacy of a goldsmith, the accuracy of a painter and the creativity of an artist to distinguish the tones and sizes that will result in the perfect combination. This intricate process was crafted in Cartier's Maison des Métiers d'Art in La-Chaux-de-Fonds and makes the Clé de Cartier Straw Marquetry watch the most complicated straw marquetry model made by Cartier, with approximately 230 straw pieces used to give life to the colourful panther. The watch is offered in a limited edition of 30 individually numbered pieces.







## Rotonde de Cartier Mysterious Hours

The Rotonde de Cartier Mysterious Hours watch takes the adornment of the mysterious hour collection to a whole new level with its deep blue aventurine dial. The sparkle of the blue aventurine can be seen through the rhodiumised 18-carat white gold Roman numerals that are set with 282 brilliant-cut diamonds on the watch face. On the left side of the dial is a mysterious hour and minute display complication powered by the Calibre 9984 MC manufacture mechanical movement with manual winding. Equipped with a 48-hour power reserve and water-resistance to 30 metres, the 35 mm Rotonde de Cartier Mysterious Hours is housed in a rhodiumised 18-carat white gold case enhanced by a bezel adorned with 62 brilliant-cut diamonds. In addition, it features a beaded crown set with a brilliant-cut diamond. The timepiece is offered with a blue alligator leather strap as well as a second strap option in white alligator leather.





The Santos de Cartier is now equipped with the SmartLink self-fitting technology



The Cartier QuickSwitch system allows the wearer to easily change watch straps



The Santos de Cartier Skeleton in pink gold with alligator skin strap

“THOSE WHO ARE INTERESTED IN GIVING THEIR WATCH A NEW LOOK WILL DELIGHT IN THE ADDITIONAL STRAP SELECTIONS THAT ACCOMPANY THE MODELS, WHICH CAN EASILY BE INTERCHANGED WITH THE QUICKSWITCH SYSTEM”



The iconic screws on the bezel of the Santos de Cartier

Furthermore, Cartier also introduces another cutting edge innovation, the SmartLink self-fitting technology (patent pending), which similarly revolutionises the watch wearing experience. With this technology, the wearer can adjust the length of the metal bracelet to the nearest link without requiring a tool. Each SmartLink is equipped with a button, and when this is pressed, the attachment bar unlatches and a brushed metal link can be added or removed from the timepiece.

#### MODEL APPRECIATION

At the Salon International de la Haute Horlogerie 2018, Cartier introduced its latest Santos de Cartier novelties to the delight of watch connoisseurs and retailers the world over. Equipped with the calibre 1847 MC movement, these watches showcase enhanced performance and comfort. With anti-magnetic nickel phosphorous components in the escapement and movement mechanisms, the

Santos de  
Cartier  
Skeleton



calibre 1847 MC features a shield made from a paramagnetic alloy. This makes the movement virtually resistant to powerful magnetic fields. In addition, the screw-down assembly design of the updated Santos de Cartier provides the watch a water-resistance of up to 100 metres. Available in large or medium sizes, the Santos de Cartier is offered in a myriad of case and strap variations. Regardless of size, the watches are offered in steel, yellow gold and steel, pink gold, and yellow gold. Those who are interested in giving their watch a new look will delight in the additional strap selections that accompany the models, which can easily be interchanged with the QuickSwitch system. For those who are inevitably drawn to an even higher level of fine watchmaking, the Santos de Cartier Skeleton watch will definitely

not disappoint. Cartier has created two versions, available in pink gold or steel. The steel model is rendered in a large size and powered by the Manufacture mechanical movement with manual winding, calibre 9611 MC. This provides the timepiece a power reserve of 72 hours and a water-resistance of 100 metres.

Other than the heart that beats within it, what greatly differentiates the Santos de Cartier Skeleton watch from the others in the Santos line is its beautiful skeleton dial. The hours and minutes on the watch face are represented by skeletonised bridges in the shape of Roman numerals. Its seven-sided crown is set with a faceted sapphire and sapphire crystal is used for the watch cover and case back. The watch comes equipped with a steel bracelet which can be conveniently interchanged with a second bracelet in luxurious alligator skin, complete with a steel double adjusting folding buckle.

The pink gold Santos de Cartier Skeleton similarly comes in a large size, but is driven by the Manufacture mechanical movement with manual winding, calibre 9619 MC. This sultry iteration is accompanied by an 18-carat pink gold bracelet, as well as a second bracelet in

“ BOTH SANTOS DE CARTIER SKELETON TIMEPIECES, AS WELL AS THE OTHER DESIRABLE WATCHES IN THE SANTOS DE CARTIER LINE, ARE CERTAINLY WORTHY FOLLOW-UPS TO THE 1904 ORIGINAL ”

alligator leather. It shares the same 72-hour power reserve as the steel version.

Both Santos de Cartier Skeleton timepieces, as well as the other desirable watches in the Santos de Cartier line, are certainly worthy follow-ups to the 1904 original. They are proof that this well-beloved and enduring collection from Cartier can not only withstand the test of time; it can also only get better as the years go by.



# PINNACLE OF Fine Watchmaking

THERE ARE SEVERAL ANNUAL GLOBAL WATCH EVENTS, BUT THE SIHH, HELD EVERY JANUARY, TRUMPS THEM ALL

Now on its 28th year, the Salon International de la Haute Horlogerie (SIHH) can simply be summed up as the most prestigious watch fair of the year. Watch maisons the likes of Audemars Piguet, Panerai, Roger Dubuis, and Cartier, take part at SIHH to showcase their latest innovative pieces to retailers, journalists, and private collectors. For five days, approximately 20,000 people from around the globe visited the SIHH held in Geneva, Switzerland. To host their guests, the 35 watch brands (up from 30 brands last year) went all out to create lavish booths in the Palexpo convention centre. The brand's booths came with mesmerising timepiece display areas and meeting rooms, including press presentation rooms. Also found within the SIHH grounds was a 100-seat auditorium, which was used to host product presentations, CEO interviews, and panel discussions.

For an event that champions handcrafted mechanical timepieces, the SIHH made full use of its digital connections. The organisers invited visitors to download the official SIHH mobile phone application to guide them around the fair, through which they could access an interactive map, news from the brands and their latest products, social

media, the press presentations schedule for journalists, and much more. The hashtag "#SIHH2018" was pasted around the venue to remind guests to include it whenever they shared their SIHH experiences online. Several brands also created their own mobile applications that featured augmented reality experiences. While the SIHH was open from morning until afternoon, every night a black tie gala dinner or cocktail party was held somewhere in the city to celebrate the various momentous accomplishments of the maisons.

Although each watch company is unique in its own right, this year, we saw a similar pattern among them: brands have resurfaced their vintage models, some used them as inspiration for new collections, while others revived iconic lines from the past. For those who are excited and can't wait to get their hands on these wonderful timepieces, be advised that not all watches presented in SIHH are immediately made available in the market, as this will be done throughout the year. Be on the lookout for upcoming editions of The Time Place Magazine for the latest news of SIHH watches being released in Southeast Asia in 2018.



Seconds, rattrapante minutes and rattrapante hours can be viewed on the dial



# TRIPLE Leap

A. LANGE & SÖHNE  
PRESENTS A TECHNICAL  
FEAT AT SIHH 2018

**T**he Salon International de la Haute Horlogerie this year can be summed up as a “humbling” year, with timepieces not just meant for the ultra-high net worth individual, but also for those who have comfortable means. As prices were much more sensible, the focus was not on watchmaking advancements. Enter the A. Lange & Söhne Triple Split, heralded by many as the innovative jewel of SIHH 2018.

A. Lange & Söhne is a champion in making chronographs, a complication made to keep track of short bursts of time. The humble chronograph is actually one of the most difficult complications to manufacture. The next level in chronographs is the rattrapante, which can measure two time intervals; i.e., it can be used to measure the time of two different racers crossing the finish line.



The breakthrough watch features four sub-dials on the grey dial

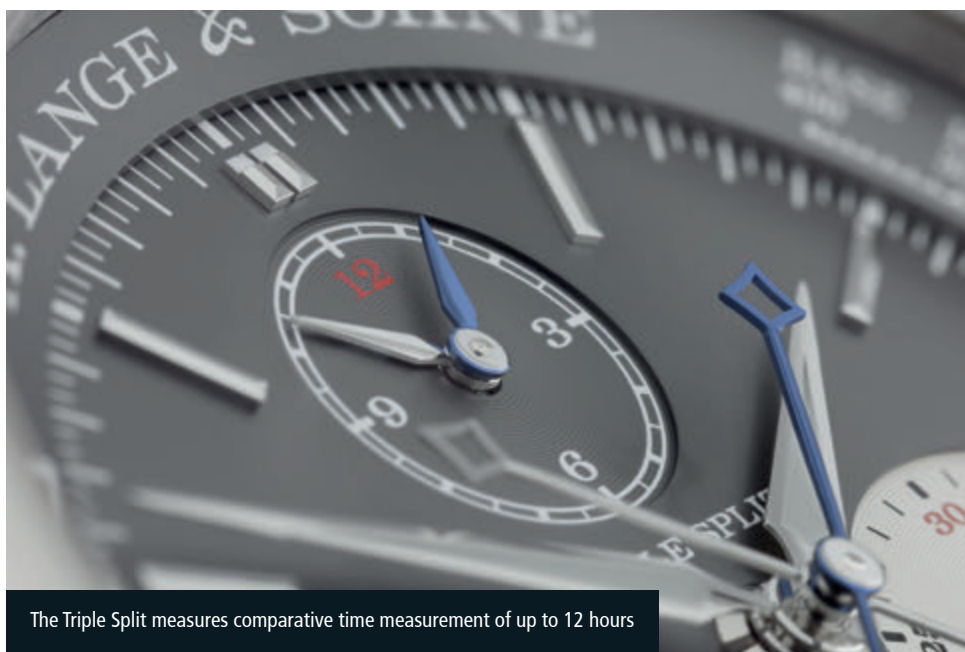


The rattrapante is really for the watch connoisseur who puts a high value on craftsmanship as it requires significant technical knowhow to create. The rattrapante works in a way that once activated, the two chronograph seconds hands move together simultaneously (one stacked on top of the other). So marvelous is the design of the movement, you won't be able to tell that there are actually two seconds hands moving together. The only way to see these two hands is with a push of a button which will freeze the first (bottom) seconds hand, meanwhile the other (top) will keep on moving. Unfortunately, the rattrapante can only measure the time difference up to a minute. A. Lange & Söhne, being A. Lange & Söhne, took up the challenge to fix this flaw. It did so by releasing the Double Split in 2004, which improved the one minute limit time difference to 30 minutes.

Living up to their motto "Never Stand Still", A. Lange & Söhne goes the extra mile and presents the Triple Split this year. This timepiece increases the 30 minute limit with the Double Split to a whopping 12 hours. At the heart of the white gold 43.2 mm timepiece is the manual-wound Lange in-house Calibre L132.1. The 567-part movement, with a 55-hour power reserve, is not only superior in its capabilities, but is also beautifully crafted and visible through the case back.



The A. Lange & Söhne Triple Split in white gold



The Triple Split measures comparative time measurement of up to 12 hours

On the timepiece's grey dial are the seconds at 9 o'clock, chronograph and rattrapante minutes at 3 o'clock, continuous hour and rattrapante hour at 12 o'clock, and the central seconds chronograph hand. Meanwhile, the power reserve indicator is located at 6 o'clock. Once the

chronograph function is activated, the three rattrapante hands in blued steel clearly set themselves apart from the rhodiumed chronograph hands. The hands that display the time and the applied baton hour markers are made of rhodiumed gold, with luminescence.

“THE RATTRAPANTE IS REALLY FOR THE WATCH CONNOISSEUR WHO PUTS A HIGH VALUE ON CRAFTSMANSHIP AS IT REQUIRES SIGNIFICANT TECHNICAL KNOWHOW TO CREATE”

Aside from the crown for winding the watch and setting the time, there are two push pieces for operating the chronograph at 2 o'clock and 4 o'clock, and one push piece at 10 o'clock for operating the rattrapante. A true technical marvel, the Triple Split is limited to only 100 pieces.

Royal  
Oak RD#2  
Perpetual  
Calendar  
Ultra-Thin



# *EVOLUTION* of First

AUDEMARS PIGUET INTRODUCES  
THE ROYAL OAK RD#2 PERPETUAL  
CALENDAR ULTRA-THIN

Despite being one of the oldest surviving industries, the Swiss watch industry continues to shatter records in watch design and creation, in this case, being a “first” in something is what leading watch brands strive for. After all, being “first” is synonymous with ingenuity – a prerequisite for traditional Swiss watchmakers to stay fresh and relevant in this digital age.

Being “first” requires one to raise the question “what if?” time and time again, despite forcibly challenging the status quo. Mind you, it is usually only within a 40 mm diameter watch case that a watchmaker has room to create and achieve a new “first”. Gladly accepting this challenge in watchmaking is Audemars Piguet. For this Le Brassus-based manufacture, “first” is indeed a



The world's thinnest self-winding perpetual calendar -  
the Royal Oak RD#2 Perpetual Calendar Ultra-Thin



state of mind. So important is the notion of all things “first”, it is cemented in its apt marketing campaign which raises the idea – “Future of First”. Audemars Piguet argues that in order to maintain its status as a trailblazer, it must continue to evolve.

An important pillar for Audemars Piguet is the Royal Oak collection. When it initially came out in 1972, it broke all conventions as the first steel luxury sports watch. Back then, the words “steel”, “luxury”, and “sports watch”, would never grace the same sentence as these were contradictions. There was no notion of a luxury sports watch that was made of steel, and prior to the Royal Oak, sports watches simply served a utilitarian function. Luxury watches were conventionally used for special occasions, while the Royal Oak was promoted as a luxury watch that can be worn for daily use and for all seasons. Aside from its material, there is



Royal Oak Offshore Selfwinding Chronograph 2018 re-edition



Case back of the Royal Oak Offshore Selfwinding Chronograph

the look of the watch with the iconic octagonal bezel and visible top screws. Its big size made the Royal Oak like nothing in the market which prompted it to be initially called the “Jumbo”. Last but not least, the Royal Oak was priced 10 times more than regular steel watches in the market during a time when the introduction of cheap Japanese quartz watches created a Swiss watch crisis.

Audemars Piguet’s bold move to launch the Royal Oak proved to be ingenious. The company realised that it needed something so disruptive to answer the Japanese quartz watch crisis that was sweeping the Swiss watchmaking industry. Granted, the Royal Oak wasn’t an overnight success as it sold way below its targets for the first three years, and brought the watch company founded in 1875, to the brink of collapse. Audemars Piguet persisted in its efforts to champion the Royal Oak, and it has definitely paid off. After over four decades of it being launched, the Royal Oak is still the most successful watch collection from Audemars Piguet and serves as a benchmark for luxury sports watches – a Swiss watch category it proudly created. “We are not the biggest fish in the market and that’s not what we aim for. Most importantly, we strive to be the first and quickest,” explained Chadi Gruber, Products Director of Audemars Piguet, who also mentioned that Audemars Piguet only produces 40,000 watches annually.

So important is the Royal Oak collection that Audemars Piguet launched the Royal Oak RD#2 Perpetual Calendar Ultra-Thin – the world’s thinnest self-winding perpetual calendar on the market, at SIHH 2018. This is indeed the “evolution of first”, as in 1978 Audemars Piguet had already held the record for the world’s thinnest self-winding perpetual calendar movement at the time with its 2120/2800 calibre. If you are wondering where the RD#2 name comes from, it is code for Research Development number two, with the first “RD” being the Royal Oak Concept RD#1 Supersonnerie launched in 2016.

“AN IMPORTANT PILLAR FOR AUDEMARS PIGUET IS THE ROYAL OAK COLLECTION. WHEN IT INITIALLY CAME OUT IN 1972, IT BROKE ALL CONVENTIONS AS THE FIRST STEEL LUXURY SPORTS WATCH”

Chadi Gruber revealed that amongst the SIHH highlights, the RD#2 was quite challenging to master. It took them five years to develop the thinnest Royal Oak ever, as trimming the thickness was the main objective, but important features such as robustness and the 40-hour power reserve were still much accounted for. The timepiece has its case and bracelet made from 950 platinum. Its blue dial with the iconic Grande Tapisserie pattern has blue counters, white gold applied hour-markers and Royal Oak hands with luminescent coating. Its dial showcases the perpetual calendar complication with day, date, astronomical moon, month, leap year, night and day indication.

Royal Oak  
Offshore  
Tourbillon  
Chronograph  
in pink gold



This year also marks the 25th anniversary of the Royal Oak Offshore, a collection which gives a sportier, more masculine and powerful take on the iconic Royal Oak and its aesthetic codes. Proof of its success is that since its launch in 1993, the 42 mm Royal Oak Offshore has seen over 120 references varying in form, function, and materials such as forged carbon, gold, and platinum. To celebrate the anniversary, Audemars Piguet launched a Royal Oak Offshore Selfwinding Chronograph 2018 re-edition of the 1993 model that remains faithful to the original. The outside remains faithful to the original piece with its stainless steel case, blue rubber crown and push pieces, and the signature blue dial with "Petite Tapisserie" pattern and a steel bracelet with the AP folding clasp. Unlike previous re-editions, the case back features an engraved "Royal Oak Offshore" logo in the centre with the word "AUTOMATIC" underneath. The significant upgrade happens under the dial as it is incorporated with the self-winding 3126/3840 calibre with a 50-hour power reserve that incorporates 25 years of horological upgrades and improvements.



Royal Oak Offshore Tourbillon Chronograph in steel

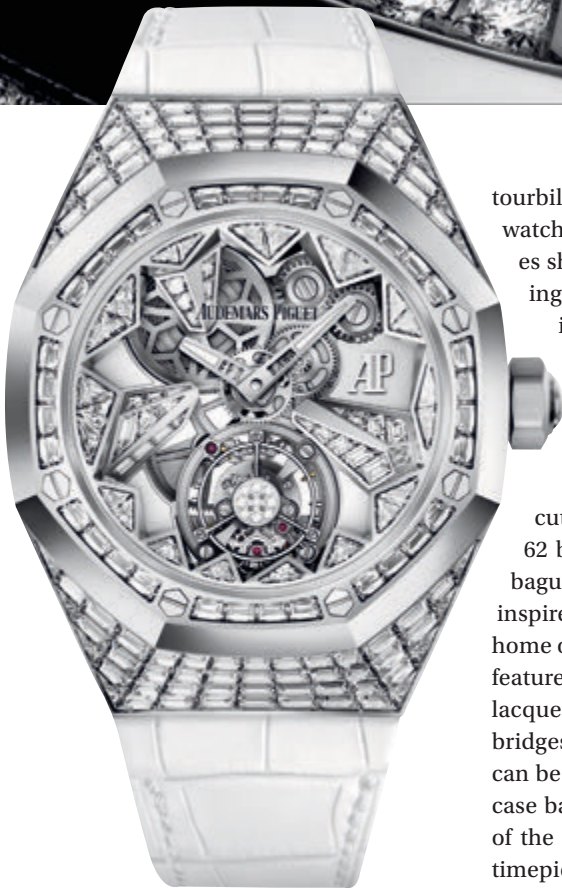
After giving a nod to the historic Royal Oak Offshore, Audemars Piguet moves in to the future by reimagining the Royal Oak Offshore Tourbillon Chronograph. This new timepiece comes in a 45 mm case, and is home to a new architectural construction featuring sandblasted titanium bridges and satin-brushed chamfered edges. The hand-wound manufacture Calibre 2947 movement is exposed to allow light to pass through the piece before hitting the sapphire case back, and makes the movement look as if it were suspended from the bezel. The case is available in 18-carat pink gold or steel, with glare-proofed sapphire crystal and case back, black ceramic screw-locked crown and push pieces. Limited to 50 pieces each, the timepiece is water-resistant to 100 metres.

This year, Audemars Piguet also introduces several outstanding pieces for ladies, including the Royal Oak Concept Flying Tourbillon, which is the first Audemars Piguet flying





Audemars Piguet's first flying tourbillon - the Royal Oak Concept Flying Tourbillon



The Royal Oak Concept Flying Tourbillon for ladies

tourbillon and the first Royal Oak Concept watch for women. After all, women's watches should be more than just about shrinking the size, adding diamonds or making it pink; this piece allows the original character of the Royal Oak Concept to adapt beautifully to a woman's wrist. The 38.5 mm 18-carat white gold timepiece is set with brilliant-cut diamonds (397 brilliant-cut diamonds for the case and buckle, 62 brilliant-cut diamonds for the dial) or baguette-cut diamonds. The timepiece is inspired by winter in the Audemars Piguet home of Vallée de Joux, as the white gold dial features faceted stone set 'icicles' and white lacquered decorations. Its satin-finished bridges, polished angles and decorations can be admired through the sapphire crystal case back, and on the dial, there's a glimpse of the openworked barrel at 11 o'clock. The timepiece is powered by the hand-wound manufacture Calibre 2951 with a 72-hour power reserve and water-resistance of up to 20 metres.

“ THIS YEAR, AUDEMARS PIGUET ALSO INTRODUCES SEVERAL OUTSTANDING PIECES FOR LADIES, INCLUDING THE ROYAL OAK CONCEPT FLYING TOURBILLON, WHICH IS THE FIRST AUDEMARS PIGUET FLYING TOURBILLON AND THE FIRST ROYAL OAK CONCEPT WATCH FOR WOMEN ”



Baume & Mercier's latest creation, the Clifton Baumatic



# MADE In-House

BAUME & MERCIER UNVEILS THE CLIFTON BAUMATIC, FITTED WITH ITS FIRST IN-HOUSE MOVEMENT

**F**or newcomers to haute horlogerie, the world of complications (and the price tag that comes with it) can be quite intimidating. Fortunately, there are some brands, such as Baume & Mercier, that strive to address the need for a reasonably priced luxury Swiss mechanical watch. Due to its sweet price points, Baume & Mercier has built a reputation as the gateway to luxury watches. One of the ways Baume & Mercier manages to keep its prices relatively low is that instead of being a vertically integrated watchmaker (producing every single component in-house), the Maison sources parts from the finest makers within the Swiss watchmaking industry.



Two tone model of the Clifton Baumatic





The Clifton Baumatic houses Baume & Mercier's first in-house manufactured movement

“THE CLIFTON BAUMATIC IS OFFERED IN A 40 MM STAINLESS STEEL CASE WITH EITHER A BLACK OR WHITE DIAL, MATCHED WITH A STAINLESS STEEL BRACELET OR A LEATHER STRAP”

For this year's SIHH, the Geneva-based watchmaker outdid itself by retrofitting one of its most successful collections, the Clifton, with its first in-house movement, and dubbing it the Clifton Baumatic. This may seem a counterintuitive move for Baume & Mercier, as an in-house movement is synonymous with premium price, “Yes it is more expensive compared to our other collections,” said Alexandre Peraldi, Design Director of Baume & Mercier. “But compared to other watches offered with an in-house movement, the Clifton Baumatic is relatively affordable, and not to mention, advanced.” Alexandre went on to explain, “When we started this project years ago, we prioritised three ‘comforts’: comfort of wearing, comfort of the eyes by being timeless and not extravagant, and most importantly, comfort on the wallet.”

For Alexandre, being affordable doesn't mean compromising on technical advancements, and surely the Manufacture did not just create an in-house movement for the sake of having one. Baume & Mercier can be proud to claim that it is the first company within the Richemont Group to harness silicon for its movement, a material which is robust, while also being anti-magnetic. Other notable advancements of the Baumatic is that it has a long power reserve, thanks to a high-precision movement, and an extended warranty. We shall highlight these advancements in detail, beginning with the Baumatic's anti-magnetic properties.

Modern men and women are surrounded by magnetic items that produce magnetic fields such as an iPad case cover or metal parts from a ladies' bag, which can possibly disturb the precision of a watch movement. This is not a problem for the Baumatic, thanks to its silicon hairspring, anchor, and escape wheel. As mentioned above, this material is particularly anti-magnetic and allows for greater resistance to minor impacts and repeated vibrations. The Clifton Baumatic can withstand magnetic fields of up to 1,500 Gauss – easily 25 times the standard for mechanical watches. Not only anti-magnetic, silicon also brings improvements to the movement's power reserve. With silicon at the heart of the movement, as well as the optimised size and material for the spring, the Baumatic is blessed with a 5-day power reserve. This is greater than the average 2 or 3-day power reserve offered by many Swiss mechanical watches.

To solidify its mark as a reliable and accurate timepiece, the Baumatic is chronometer-certified by COSC, with a minor variation of -4/+6 seconds per day. This precision is made possible thanks to the newly developed hairspring coupled with the new variable-inertia balance wheel. The combination of the two guarantees precision even when the watch is held in various positions. Last but not least, Baume & Mercier is confident in offering a 5-year war-



The Baumatic™ BM12-1975A calibre

ranty for the Baumatic. The typical mechanical watch has a 3-year warranty, with the main issue being the lubrication of the movement's parts. Baume & Mercier addresses this issue by developing dedicated oils to guarantee optimal lubrication, and as a bonus, the silicon parts only require minor lubrication. Going further, the brand has also developed new test procedures with the aim to simulate more than 10 years of intense use.

The Clifton Baumatic is offered in a 40 mm stainless steel case with either a black or white dial, matched with a stainless steel bracelet or a leather strap. To summarise, the Baumatic is the ultimate client-centric, hassle-free Swiss mechanical watch.



The new  
Panthère de  
Cartier



# ICONIC

## Rebirth

CARTIER ENHANCES TWO LINES AND IMBUES THEM WITH PLAYFUL VARIETY

In a world overwhelmingly dominated by round-cased watches, the square case is a shape many watchmakers would rather avoid. Granted, every now and then a number of brave brands try their luck with presenting a watch in this unique form. Cartier is one such Maison. It first introduced the Cartier Santos, a timepiece well-defined by its square-shaped case, in the early 20th century, and followed this up with the more delicate Panthère de Cartier in 1983.

For 2018, Cartier continues its legacy of distinctive watch creation by revamping these iconic collections. First up is the Panthère de Cartier. Exuding true femininity, the Panthère de Cartier is an iconic watch of the 80s, and was re-launched by Cartier last year. Hallmarked by a dainty square case with rounded corners, similar to the Santos, the timepiece is an ode to the carefree feminine spirit and retains the classic elements of the original. This includes the perfectly placed screws around the dial, the octagonal



Panthère de Cartier in white gold with triple loop bracelet



The new  
Santos de  
Cartier



sapphire crown and the distinguished Roman numerals. What's different about this new unveiling though is the variety of case materials, watch straps, and ornamentation, including diamonds and black lacquer, on offer.

Upholding the concept of playful variety, Cartier is offering a range of sizes and feminine looks for the new Panthère de Cartier ladies' timepiece collection. Aside from the conventional strap offering, the Panthère de Cartier is also available with a double or triple loop bracelet. This triple loop bracelet is in line with the trend of women wearing the Panthère de Cartier loose in a manner similar to wearing a bracelet. All the timepieces in the collection are powered by a Cartier quartz movement and are available in mini, small and medium sizes. The case and strap are rendered in steel, yellow gold, pink gold, white gold, or a combination of gold and steel, and some models have diamond paving on the case and strap. In essence, the Panthère de Cartier is the perfect marriage between jewellery and timepiece; it has the timeless quality which is ideal for both casual and formal occasions.

From one classic to another, Cartier relaunches the Santos de Cartier this year. The Santos was first created in 1904 by Louis Cartier for his close friend Alberto Santos-Dumont, a Brazilian aviation pioneer. A watch strapped on Alberto's wrist proved an easier way to tell the

“

*UPHOLDING  
THE CONCEPT  
OF PLAYFUL  
VARIETY, CARTIER  
IS OFFERING A  
RANGE OF SIZES  
AND FEMININE  
LOOKS FOR THE  
NEW PANTHÈRE  
DE CARTIER  
LADIES' TIMEPIECE  
COLLECTION*”

time mid-flight than carrying a pocket watch. In a short period of time, the Santos became a hit, and throughout the years, the timepiece grew in its collection and following.

In a surprising move, Cartier discontinued the Santos de Cartier in 2016, and it was only recently that we finally understand that it was for a good reason. The Maison took its time in envisioning a rejuvenation of the collection, the result of which was launched in SIHH 2018.

In updating this timepiece, Cartier states that it focused on comfort, intelligent proportions and respect for the Santos aesthetic.

The new Santos de Cartier retains the square case with its visible eight screws on the bezel. However, the shape is now tapered and extended to the lugs which Cartier has crafted to allow the timepiece to be perfectly snug on the wrist. Underneath the case is the 1847 MC automatic calibre which has anti-magnetic nickel phosphorus components in the escapement and movement mechanisms, as well as a shield made from a paramagnetic alloy, making the calibre effectively resistant to powerful magnetic fields.

The timepiece is offered in large and medium sizes, with either a stainless steel, pink gold, yellow gold or even a steel and yellow gold case. Also on offer is a stainless steel or pink gold skeleton version for the large size. Then there is the plethora of coloured leather straps available. Cartier has also made changing straps easy with just a push of a button hidden under the strap – Cartier calls it the Cartier QuickSwitch system. Meanwhile, the length of the Santos de Cartier's metal bracelets is now easily adjustable too without the use of any special tools, thanks to the SmartLink self-fitting technology. These thoughtful innovations revolutionise Cartier's modern timepiece, ushering it into the future and beyond.

IWC Tribute  
to Pallweber  
Edition  
"150 Years"  
Pocket  
Watch with  
Digital Hours  
and Minutes  
Display



# EXCELLENT Engineering

IWC CELEBRATES 150<sup>th</sup> YEARS  
OF FINE WATCHMAKING

The year 2018 is important for the International Watch Company (IWC) as it marks their 150<sup>th</sup> anniversary. It was in 1868 when American watchmaking pioneer, Florentine Ariosto Jones, set up his watch company in Switzerland, which combined Swiss craftsmanship with American manufacturing technology, with a mission to create the best pocket watches of his era. To celebrate one and a half centuries of fine watchmaking, the Schaffhausen-based company is treating its fans to a capsule collection, comprised of multiple timepieces from existing IWC collections that are united by a single theme.

Called the Jubilee Collection, all the timepieces are defined by either a white or blue lacquered dial. According to Walter Volpers, Associate Director of Product Management Technics at IWC, it was nothing short of challenging to present the Jubilee Collection. Walter is directly responsible for managing the collection, from idea conception to finished products, "I've been with IWC for nine years, and last year was indeed the most demanding year," said Walter. "The best part of



IWC Portugieser Constant-Force Tourbillon Edition  
"150 Years"





IWC Tribute to Pallweber Edition "150 Years"

“

THE LINE FEATURES TIMEPIECES FROM FOUR OF THE SIX IWC COLLECTIONS: THE PORTUGIESE, PORTOFINO, DA VINCI AND PILOT'S WATCH ”



The new hand-wound in-house 94200 calibre

my job is seeing a completed technical prototype, as it is the closest thing to the end result and all our hard work has paid off.”

The line features timepieces from four of the six IWC collections: the Portugieser, Portofino, Da Vinci and Pilot's Watch. And on top of this, the Jubilee Collection includes the IWC Tribute to Pallweber Edition "150 Years", inspired by the IWC Pallweber pocket watch produced in 1884. As a matter of fact, the whole Jubilee Collection is very much inspired by this Pallweber pocket watch. "This was an ultra-modern pocket watch when it first came out," said Christian Knoop, Creative Director of IWC Schaffhausen. "The idea of using discs instead of hands to tell the time was indeed a breakthrough." In essence, it was a mechanical pocket watch that told time similarly to that of a modern-day digital watch. IWC managed to link the past and future with this piece by maintaining the aesthetic codes from the original iconic pocket watch and modernising its

Great effort was undertaken to complete the Jubilee Collection





IWC Da Vinci Automatic Moon Phase 36 Edition "150 Years" in red gold



The 40 mm IWC Da Vinci Automatic Edition "150 Years"



The IWC Da Vinci Automatic Edition 150 Years is the first watch to feature the new IWC-manufactured 82200 calibre



Special case back for the 150<sup>th</sup> anniversary



IWC Da Vinci Automatic Moon Phase 36 Edition "150 Years" in white gold

movement. "Back then, people wouldn't mind if they had to wind their pocket watch twice a day, or if it wasn't accurate one to two minutes a day," Christian said. "Now with the new hand-wound in-house 94200 calibre powering the IWC Tribute to Pallweber Edition "150 Years", the timepiece is very accurate and has a 60-hour power reserve, plus the movement itself looks aesthetically pleasing."

It took IWC five years to develop this calibre which resulted in the booking of three patents (pending). The 45 mm IWC Tribute to Pallweber Edition "150 Years" comes in a platinum (25 pieces) or 18-carat red gold (250 pieces) case with a white lacquered dial, white display discs, and a blued seconds hand. It also comes in a stainless steel version with a blue dial limited to 500 pieces. IWC also unveiled the Tribute to Pallweber Edition "150 Years" in a pocket

watch version limited to 50 pieces. Powered by the same 94200 movement, it is housed in an 18-carat red gold case with an added closed dust cover on the backside.

While the IWC Tribute to Pallweber Edition "150 Years" is highlighted, the Portugieser Constant-Force Tourbillon Edition "150 Years" serves as the flagship of the Jubilee collection. The idea behind this technically advanced timepiece is simple: to bring two aesthetically pleasing complications – a constant force tourbillon and a single moon phase

display – together in a Portugieser timepiece. Visible on the 46 mm dial is the tourbillon with an integrated constant-force mechanism at 9 o'clock. This is displayed harmoniously with a perpetual moon phase at 1 o'clock, and a power reserve indicator at 4 o'clock. The hand-wound 94805 calibre has a power reserve of 96 hours, and the moon phase display will stay its correct course up to 577.5 years. The Portugieser Constant-Force Tourbillon Edition "150 Years" is available in a platinum case with either a white or blue dial, and each are limited to 15 pieces. Other Portugiesers in the Jubilee



IWC Big  
Pilot's Watch  
Annual  
Calendar  
Edition  
"150 Years"



collection include a perpetual calendar with tourbillon, a perpetual calendar, chronograph, and a clean dial 8-day hand-wound version.

Moving on to the Portofino collection, the 40 mm Portofino Automatic Edition "150 Years" with a blue lacquered dial is a sure favourite. This piece is both elegant and understated, perfect for formal events. Limited to 2,000 pieces, the self-winding mechanical movement has a 42-hour power reserve. Two other Portofinos within the Jubilee collection are the Portofino Chronograph Edition "150 Years" and the Portofino Hand-Wound Moon-Phase Edition "150 Years". All the Portofino timepieces are only available in a stainless steel case, except for the Portofino Hand-Wound Moon-Phase Edition "150 Years" which is also available in an 18-carat red gold case.

The Da Vinci, a collection most recognised by its circular case with a twin frame bezel, now presents two watches - in 40 mm and 36 mm. The 40 mm Da Vinci Automatic Edition "150 Years" is limited to 500 pieces and is powered by the IWC-manufactured 82200 automatic calibre with a 60-hour power reserve. This movement is decorated with circular graining and Geneva stripes can be admired through the sapphire anti-reflective case back. Meanwhile, the Da Vinci Automatic Moon Phase 36 Edition "150 Years" is offered in either 18-carat white gold or red gold (each limited to 50 pieces), with a power reserve of 42 hours.

“

THE BIG PILOT'S  
WATCH ANNUAL  
CALENDAR EDITION  
"150 YEARS" AND  
THE BIG PILOT'S  
WATCH BIG DATE  
EDITION "150 YEARS"  
COME IN RATHER  
OUTSTANDING  
46.2 MM CASES ”

Last, but not the least, are the IWC Pilot Watches presented in three variations. The Big Pilot's Watch Annual Calendar Edition "150 Years" and the Big Pilot's Watch Big Date Edition "150 Years" come in rather outstanding 46.2 mm cases (both are limited to 150 pieces each), with the former powered by the IWC-manufactured 52850 automatic calibre with 7-day power reserve while the latter is driven by the IWC-manufactured 59235 calibre with 8-day power reserve. The Pilot's Watch Chronograph Edition "150 Years" (1,000 pieces), on the other hand, is housed in a 43 mm stainless steel case.



IWC Pilot's  
Watch  
Chronograph  
Edition  
"150 Years"

All in all, the Jubilee Collection offers IWC fans a stunning variety of collectible watches available at different price points, with varying case sizes, and equipped with an array of high-tech complications. They are a great testament to the brand's longevity and undisputable prowess in advanced timepiece engineering.





The Jaeger-LeCoultre Polaris Memovox

# SPORTY Elegance

FOR SIHH THIS YEAR,  
JAEGER-LECOULTRE SET  
ITS EYES ON A NEW TYPE  
OF CLIENTELE

**J**aeger-LeCoultre aims to attract individuals who are new to haute horology and the Maison. To do this, the 185-year-old watchmaker is banking on the Polaris collection, versatile sports watches which can be used day or night. Most importantly, these watches are being offered at prices that are not as intimidating as other Jaeger-LeCoultre timepieces.

This new collection is inspired by the 1968 Jaeger-LeCoultre Memovox Polaris, an impressive diver's watch with a mechanical alarm that functions underwater. Released 50 years ago, the look of the Memovox Polaris is nothing short of timeless. The new variations have



Blue dial iteration of the Polaris Chronograph





Jaeger-LeCoultre Polaris Automatic



Case back of the Jaeger-LeCoultre Polaris Date



Jaeger-LeCoultre Polaris Chronograph in rose gold

“ THIS NEW COLLECTION IS INSPIRED BY THE 1968 JAEGER-LECOULTRE MEMOVOX POLARIS, AN IMPRESSIVE DIVER’S WATCH WITH A MECHANICAL ALARM THAT FUNCTIONS UNDERWATER ”

roots in this one watch, which can be identified by the trapezoidal indexes on the black dial. For the 2018 collection, the watch case has been reworked but is still faithful to the original. The dial has a triple tone finish: sun-ray finish in the centre, graining in the middle where the indexes are, and an opaline-finished rotating inner bezel. The large hour and minutes hands and numerals are filled with Super-LumiNova™ for perfect legibility in the dark.

The standout piece of the whole collection is the new, 1,000-piece, Jaeger-LeCoultre Polaris Memovox. This rebirth piece is the only one in the collection that carries a similar alarm function to the original. The alarm is activated by rotating the top crown. Meanwhile, the middle crown is for setting the inner rotating bezel, and the bottom is for setting the time. This 42 mm timepiece is powered by the new Jaeger-

LeCoultre Calibre 956 with a 44-hour power reserve.

In addition, the line includes a three-hand automatic, the Polaris Date, a chronograph, and chronograph with world time. The three-hand automatic has two crowns: one for rotating the inner bezel to track elapsed time, and the other for setting the time. This 41 mm timepiece has either a blue or black dial, and is powered by the automatic Jaeger-LeCoultre Calibre 898/1 with a 40-hour power reserve. Meanwhile, the Polaris Date features Vanilla Super-LumiNova™ and a glass box where the crystal is raised from the case, similar to the 1968 version. The case back boasts a SCUBA diver engraving and is water-resistant up to 200 metres.

The 42 mm chronograph version (in stainless steel or rose gold), is the sportiest model with its tachymeter bezel. Two chronograph pushers are at 2 o’clock and 4 o’clock, while a crown at 3 o’clock sets the time. Under the blue or black dial is the Calibre 751 automatic movement with a 65-hour power reserve.

Last, but not least, is the chronograph with world time. At 44 mm, the titanium watch is the edgiest variation within the collection. The crown at 10 o’clock controls the rotating city disc, which sets the city where the wearer is, while simultaneously allowing for viewing the time in 23 other cities around the globe. Its Calibre 752 automatic movement has a 65-hour power reserve.

The watches are available with a variety of different straps: steel, vintage calf leather, alligator, or rubber, which is true to the spirit of the Memovox.



Luminor Due 3 Days Automatic 42 mm, Luminor Due 3 Days Automatic 38 mm with light blue strap and Panerai Luminor Due 3 Days Automatic 38 mm with mint green strap

# COLOURS of Innovation

PANERAI STRENGTHENS  
ITS COLLECTIONS AND  
CONTINUES TO INNOVATE

**D**uring SIHH 2018, it was revealed that Panerai is focused on enhancing the selections of two of its strong collections: the Luminor and Luminor Due. Additionally, the brand presented two innovative pieces that speak volumes about its pursuit of taking haute horology to the next level.

## UPPING THE ANTE

It was in 2016 when Panerai launched the Luminor Due collection, a reworking of the Luminor collection with the aim to make it the thin option of Panerai timepieces. In essence, the Luminor Due has become the dress watch

for Panerai fans to wear with their suits during black tie events.

After going thinner this year, Panerai is also taking the smaller size route, with the launch of the 38 mm Luminor Due, the smallest diameter of a Panerai timepiece available. Four 38 mm (11.2 mm thick) options are available in either AISI 316L stainless steel or 5NPT red gold. They have dials either in anthracite, ivory or black.

Aside from the classic black leather strap, Panerai equipped the 38 mm model with co-

lourful leather strap options: light blue, blue with saffiano finish, and mint green. Panerai also launched two 42 mm Luminor Due models. Despite having a bigger diameter size, the 42 mm Luminor Due have slightly thinner cases at 10.5 mm. The two new models have AISI 316L stainless steel cases with an anthracite dial (with an untreated brown leather strap) or an ivory dial (with a blue leather strap with saffiano finish). All Luminor Due 38 mm and 42 mm models are powered by the Manufacture OP XXXIV automatic calibre with three days power reserve. All of them are equipped with a small seconds counter at 9 o'clock and a date window at 3 o'clock.

Meanwhile, Panerai released six timepieces in the Luminor collection: three are Luminor Base Logo 3 Days and three are Luminor Marina Logo 3 Days. The difference between the Luminor Base and the Luminor Marina is that the latter has a seconds counter at 9 o'clock. Powering these timepieces is the new P.6000 in-house calibre, hand-wound with a power reserve of three days and protected within a 44 mm polished steel case. Similar to the Luminor Due, the Luminor is also available with a variety of coloured straps in blue, grey, and brown. It also comes with a white dial option.



## HIGHLIGHTING DEVELOPMENT

Panerai also unveiled two innovative pieces: the Lo Scienziato - Luminor 1950 Tourbillon GMT Titanio and the made-to-order L'Astronomo - Luminor 1950 Tourbillon Moon Phases Equation of Time GMT. The Lo Scienziato is about Panerai harnessing the latest technological innovations to create a timepiece. The watch boasts a titanium 3D-printed case using the Direct Metal Laser Sintering technique. This process builds up a 3D object layer by layer by means of a fibre optic laser using powdered titanium. The successive layers - each one only 0.02 mm thick- merge together and become completely solid, creating forms which would be impossible to achieve using traditional working methods. In addition, these cases weigh less and are perfectly uniform, even in appearance.



The Lo Scienziato - Luminor 1950 Tourbillon GMT Titanio



Moon phase of the L'Astronomo - Luminor 1950 Tourbillon Moon Phases Equation of Time GMT



The L'Astronomo - Luminor 1950 Tourbillon Moon Phases Equation of Time GMT

“

PANERAI ALSO UNVEILED TWO INNOVATIVE PIECES: THE LO SCIENZIATO - LUMINOR 1950 TOURBILLON GMT TITANIO AND THE MADE-TO-ORDER L'ASTRONOMO - LUMINOR 1950 TOURBILLON MOON PHASES EQUATION OF TIME GMT ”

As for the made-to-order L'Astronomo model, it has a vault of impressive feats visibly presented both in the front and the back of its 50 mm brushed titanium case. This includes the date, month indicator, GMT, equation of time, sunrise/sunset times, tourbillon, as well as the moon phases and the power reserve indicator on the case back. The first of Officine Panerai's creations to have a moon phase indication, the L'Astronomo has an innovative system using polarised crystals to indicate the date. This remarkable made-to-order timepiece can be personalised, a novel feature that greatly enhances the special series dedicated to the genius of renowned artist, scientist and innovator, Galileo Galilei.



Piaget  
Altiplano  
Ultimate  
Automatic  
910P  
watches



# ACHIEVEMENT

## Unlocked

PIAGET CONTINUES TO PUSH  
THE LIMITS OF ULTRA-THIN  
WATCHMAKING

**I**n haute horlogerie, Piaget is leading the race in ultra-thin horology. The company, founded in 1874, continues to break watchmaking records, with the presentation of not one, but two world records in SIHH 2018. First is the Altiplano Ultimate Automatic 910P, which is the world's thinnest mechanical automatic watch at just 4.30 mm thick. The next record-shattering timepiece is the Altiplano Ultimate Concept, the world's thinnest mechanical hand-wound watch at just 2 mm, roughly the thickness of a US 25 cent coin. It took four years to develop this concept watch, but the

roots of Piaget's ultra-thin affair goes back to 1957 when it unveiled the 2 mm hand-wound Calibre 9P, one of the world's thinnest manual winding mechanical movements during that time. Then in 1960, Piaget went on to deliver the 2.3 mm Calibre 12P self-winding movement, which back then was the world's thinnest self-winding movement. Piaget went on to break more records in 2014 with the hand-wound Altiplano 900P – the world's slimmest mechanical watch measuring 3.65 mm. This revolutionary timepiece has a case that also acts as a baseplate for the movement.

This year, Piaget presents the world's thinnest automatic watch, the 4.30 mm Altiplano Ultimate Automatic 910P. It took three years for Piaget developers, engineers, watchmakers, designers, and case and movement engineers to conceive this model. Taking cues from the Altiplano 900P, the movement and case form a single entity, with the latter serving as a mainplate to which 219 incredibly thin components are placed. Clearly, everything had to be minimised to the extreme, including some wheels at just 0.12 mm thick. To make this watch as thin as possible, the bridges are fitted on the dial side and the going train is also revealed. Basically, the thickest component within the 41 mm diameter case is its balance wheel, thus the other components must be built around it – even the hours and minutes display had to be placed off-centre at 10 o'clock.

An issue that the timepiece makers had to deal with was if the glass was accidentally pressured, it would press against the hour and minutes hands thus distorting time function. This issue is unique to ultra-thin watches,



The Piaget Altiplano Ultimate Automatic 910P measures only 4.30 mm in thickness



Profile view of the Piaget Altiplano Ultimate Concept



Piaget Altiplano Ultimate Concept

contribute to overall slimness. What was not compromised is the Altiplano Ultimate Automatic's generous 50-hour power reserve.

Meanwhile, the Altiplano Ultimate Concept is a concept watch, not yet set for production. Similar to a concept car presented in an auto show, the point of the concept timepiece is to validate new technologies which will liberate the creativity for future timepieces. Imagine at just 2 mm thick, this working timepiece is as thin as the iconic 9P Calibre movement launched in 1957. Piaget spent four years in developing this watch and filed five patents for it. Basically, the timepiece only has two lay-

where space is very limited. The solution – the Piaget watchmakers fitted the hands below the bridges, thus freeing up space between the cannon-pinion and the glass. If the glass is distorted due to pressure, it no longer pushes on the hands, but on the gear-train bridge instead, ensuring the smooth running of the movement. Also, in creating the thinnest automatic watch, Piaget managed to create a suspended barrel, held by a single bridge on the dial side, contrary to customary barrels that are also fixed on the mainplate side. The oscillating weight in 22-carat gold with black PVD coating is positioned on the movement periphery so as to be incorporated into its thickness and



Pink gold model of the Altiplano Ultimate Automatic 910P

“ THIS YEAR, PIAGET PRESENTS THE WORLD'S THINNEST AUTOMATIC WATCH, THE 4.30 MM ALTIPLANO ULTIMATE AUTOMATIC 910P. IT TOOK THREE YEARS FOR PIAGET DEVELOPERS, ENGINEERS, WATCHMAKERS, DESIGNERS, AND CASE AND MOVEMENT ENGINEERS TO CONCEIVE THIS MODEL ”

ers. The case, movement, and bezel are fused into one, using a cobalt alloy which is strong and resistant to various forms of wear. And the other layer is the dial, bridges and hands. The timepiece is so thin, there is a special device for time setting and winding the crown. And it is equipped with an ultra-thin 1.1 mm thick alligator leather strap with a Kevlar core and a velvet calfskin lining which is secured by a likewise ultra-thin pin buckle. With the creation of the Altiplano Ultimate Concept, Piaget has truly made the impossible, possible.

Roger Dubuis  
Excalibur  
Aventador S  
Blue



# PERFECT Partnerships

ROGER DUBUIS HEIGHTENS  
ITS OFFERINGS WITH  
UNPARALLELED EXPERIENCES

**F**rom the design of its watches to the partnerships it forms, Roger Dubuis is a watch brand with disruption in its DNA. The design codes of the Geneva-based watchmaker is somewhat defiant to the conventional norms of luxury Swiss watches, which is clearly visible in its latest offerings. On its own, the Excalibur - Roger Dubuis' flagship collection - evokes a blast of emotions while also being a technologically super-charged timepiece that looks supercool.

In 2017, Roger Dubuis turned up the heat by partnering with titans in the world of motorsports. First with Pirelli in SIHH 2017, then with Italdesign during the 2017 Geneva



Back of the blue version of the Excalibur Spider Pirelli - Automatic Skeleton



International Motor Show, and most recently, with Lamborghini at the end of 2017. These partnerships are more than just slapping the aforementioned motorsport brands on a Roger Dubuis watch – these partnerships make sense as Roger Dubuis, along with the trio of Italian motorsport brands, share a progressive, disruptive nature. More importantly, the partnerships with Pirelli and Lamborghini incorporates proprietary technology transfers to create distinct timepieces.

In the world of Formula 1, the highlights are commonly the driver and the engine powering the supercar. However, hidden beneath the Formula 1 car lies approximately 80,000 components that are carefully assembled with the utmost attention to detail. It is after all the most competitive and technologically advanced motorsport in the world. Not a single component is spared from top secret technology development, including the humble tires. Right off the bat, Pirelli is the sole supplier of tires for



Roger Dubuis booth at SIHH 2018



Previewing the Excalibur Aventador S Pink Gold

Formula 1 cars so that alone should speak volumes of what the brand represents. One would be quick to dismiss that tires are “just made of rubber” and has nothing to do with developing high tech diodes nor semiconductors. On the contrary, developing the right rubber formula for Pirelli tires is crucial to keep up with ever faster and demanding Formula 1 races. For example, the average cornering speed in turn 9 of the Barcelona circuit during the 2016 season was 215 km/hour, meanwhile in the 2017

season, it went up to 245 km/hour. Then, there is the extreme asphalt temperature, hottest in Hungary (55 degrees Celsius) and coolest in China (14 degrees Celsius). A Pirelli spokesperson mentioned that after testing a new set of tires, the used tires must be accounted for and discarded properly to prevent corporate espionage.

As a direct result of the partnership with Pirelli, Roger Dubuis launched two references during

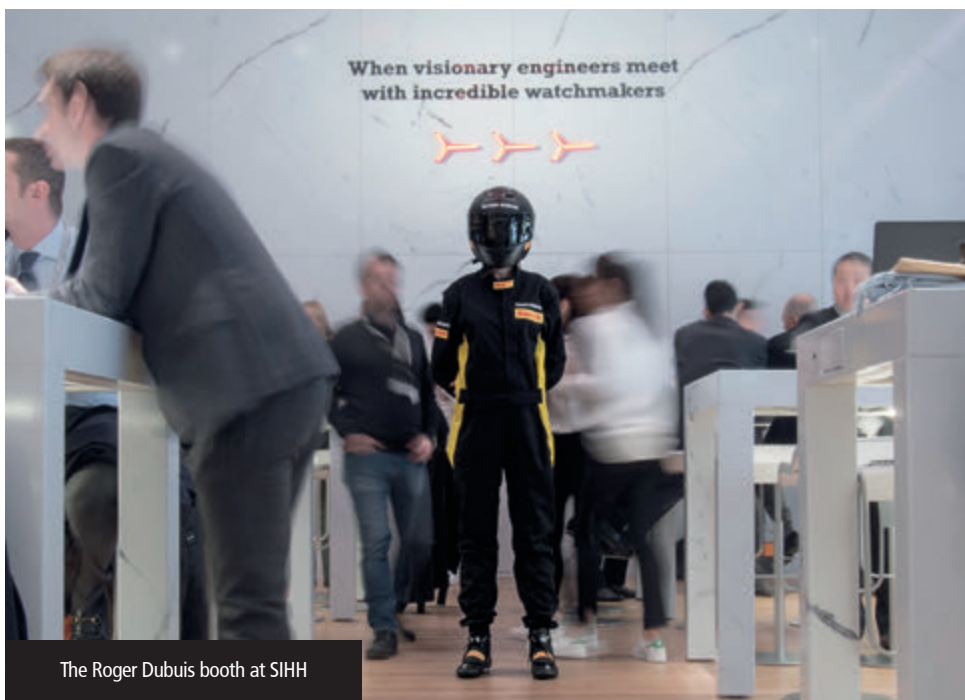
“

CONTINUING ITS MOTORSPORT COLLABORATIONS, IN LATE 2017, ROGER DUBUIS INKED A PARTNERSHIP WITH LAMBORGHINI. THE TWO BRANDS ARE A CLEAR MATCH AS BOTH SHARE A DIRE THIRST FOR AVANT-GARDE INNOVATION AND EXCLUSIVE PRODUCTION”

last year’s SIHH; the Excalibur Spider Pirelli - Double Flying Tourbillon (limited to 8 pieces) and the 45 mm Excalibur Spider Pirelli - Automatic Skeleton (limited to 88 pieces). Further linking the collaboration is that the watch straps are crafted from actual winning Pirelli Formula 1 tires. For SIHH 2018, Roger Dubuis unveiled the Excalibur Spider Pirelli - Automatic Skeleton in sleek black titanium available in two colour accent options: deep blue or pristine white.



A close-up of the Excalibur Aventador S Blue



The Roger Dubuis booth at SIHH

Speaking with *The Time Place Magazine*, Gregory Bruttin, Product Director of Roger Dubuis, mentioned that the deep blue strap comes from the winning tires of Lewis Hamilton in the 2017 Austin Grand Prix, meanwhile the white strap is from Valtteri Bottas' win at the Abu Dhabi Grand Prix last year. These timepieces are both powered by the Calibre 820SQ automatic

movement with micro-rotor and are equipped with a power reserve of 60 hours.

Continuing its motorsport collaborations, in late 2017, Roger Dubuis inked a partnership with Lamborghini. The two brands are a clear match as both share a dire thirst for avant-garde innovation and exclusive production. Not to

mention, the persona and the type of clientele the two brands cater to are not far off. "In its 22-year existence, Roger Dubuis had never entered into any kind of partnership," said Roger Dubuis CEO, Jean-Marc Pontroué, upon unveiling the partnership with Lamborghini last year. "Then, after teaming up with Pirelli at the start of the year, we went on to sign a deal with Lamborghini in September. We couldn't have dreamed of a more spectacular positioning, given the powerful mechanical content of our watches, and the shared drive for research and innovation. These partnerships pretty much speak for themselves!"

To mark the launch of the partnership, Roger Dubuis first presented the 45 mm 8-piece limited edition Excalibur Aventador S with orange highlights. Roger Dubuis developed the new 312-component RD103SQ movement with double balance wheels (dubbed Duotor by Roger Dubuis). Form inspired the function of this movement, so much so that if one were to pop open the hood of a Lamborghini Aventador engine, the resemblance would immediately be apparent. Starting off with the X-shaped engine strut bar protecting the Aventador engine, which is also present on the top part of the watch movement, all the way to the movement's angled double balance wheels which matches the Aventador's suspension assembly. All eight orange pieces are already sold, and for SIHH 2018 Roger Dubuis launched the Excalibur Aventador S Blue (limited to 88 pieces) and the Excalibur Aventador S Pink Gold (limited to 28 pieces). Similar to the first orange-highlighted piece, the Excalibur Aventador S Blue is also crafted using Lamborghini's proprietary C-SMC carbon. Bruttin also mentioned that cutting the C-SMC carbon used in Lamborghini cars to the small and precise specifications of the watch proved to be a challenge – one that was necessary for them to overcome in order to strengthen the connection between the car and the watch. The blue highlights go on the strap, case, and crown, while the fluted carbon bezel features blue markings. As for the pink gold piece, it comes with a skeleton dial with black flange, pink gold plated indexes filled with white luminous SLN, and 18-carat black PVD coated gold hands with black luminous SLN tips. Its pink gold crown is overmolded with black rubber. The strap is made of both black rubber and black Alcantara® inlays enhanced with golden stitching. The timepieces are water-resistant to 50 metres.

Perhaps the cherry on top for the lucky few buyers of these watches is that they will enjoy money-can't-buy perks. These timepieces act as special keys to unlocking a world of experi-



# ROGER DUBUIS

D A R E T O B E R A R E

Roger Dubuis stays on track in 2018 with four stunning timepieces



Ready for Adventure

## Excalibur Aventador S Blue

Pushing the pedal to the metal, Roger Dubuis brings the parallel worlds of haute horlogerie and luxury supercars together in a singular partnership with Lamborghini Squadra Corse. Driven by the "Powered by Raging Mechanics" signature, the Excalibur Aventador S Blue is a feat of mechanical engineering. At the heart of this cutting-edge timepiece beats the Poinçon de Genève 312-part RD103SQ movement with an impressive Duotor (double balance wheel) concept.

This complex mechanism is housed in C-SMC carbon, the very same material used on the Italian supercars. But the royal treatment does not stop there. The Excalibur Aventador S Blue is aptly named because of its black and Neptune blue bi-material strap, with blue rubber over-moulding on the case and crown, as well as blue markings on the fluted carbon bezel. Equipped with a power reserve of 40 hours, this exclusive timepiece is offered in a limited edition of 88 pieces.



Elegant Efficiency

## Excalibur Aventador S Pink Gold

The result of highly complicated watchmaking inspired by the automotive world, the Excalibur Aventador S Pink Gold brings Roger Dubuis' and Lamborghini Squadra Corse's partnership to life. Measuring a substantial 45 mm, the high-performance model is propelled by the 312-part RD103SQ movement. However, this mechanism does not just power the watch, it also serves as an identifying adornment on the skeleton dial. Reflecting the longitudinal placement of Lamborghini engines, the double balance wheel

of the calibre is positioned in a similar manner and supported by holders shaped like triangular wheel suspension assemblies. Warm pink gold accents including a fluted pink gold bezel with black markings and a pink gold crown overmoulded with black rubber round off the high-octane timepiece. Available in a very limited run of 28 pieces, the Excalibur Aventador S Pink Gold comes with a bi-material strap with a black rubber base and black Alcantara® inlay, adorned with golden stitching.





Racing Spirit

## Excalibur Spider Pirelli

Automatic Skeleton Deep Blue

A speed icon in its own right, Pirelli tyres have accompanied a myriad of race champions the world over to victory. In a similar vein, the well-established company has now entered the world of haute horlogerie with a winning partnership with Roger Dubuis. Enter the Excalibur Spider Pirelli, with its Automatic Skeleton with micro-rotor movement, RD820SQ. Crafted in sleek black titanium, the high-performing watch boasts a fluted titanium black DLC skeletonised bezel,

complemented by a crown over-moulded with blue rubber. Equipped with a power reserve of 60 hours, the Excalibur Spider Pirelli is water-resistant to 50 metres. But what sets this creative masterpiece apart is its unique strap. The bi-material strap has a black rubber base and a Pirelli winning motorsport tyre rubber inlay, with blue stitching. It features a unique Pirelli tyre pattern on the inside of the strap. This 88-piece model also comes with the quick release system for easy interchangeability of the strap.



Championing Time

## Excalibur Spider Pirelli Automatic Skeleton White

The wow factor of the Perfect Fit Pirelli is rendered by Roger Dubuis in the Excalibur Spider Pirelli. The watch captivates with just one glance at its 45 mm skeletonised, titanium black DLC case. Furthermore, the eye is drawn deeper into the black and white skeleton dial; noticeable on the right side is the titanium black DLC crown overmoulded with white rubber. On the watch face are rhodium plated indexes with white luminous SLN, 18-carat gold black PVD hands with white transfer and white luminous SLN tips.

However, what makes this watch a true engineering feat is its Automatic Skeleton movement with micro-rotor, RD820SQ. This powerhouse Poinçon de Genève calibre provides the timepiece with 60 hours of power reserve. To make the watch a true racing winner, it is equipped with a bi-material strap with a black rubber base and a Pirelli winning motorsport tyre rubber inlay with white stitching. A unique Pirelli tyre pattern is featured on the inside of the strap. The Excalibur Spider Pirelli – Automatic Skeleton is offered in 88 pieces.





Pink gold heightens the elegance of the Excalibur Aventador S

“

THE FIVE-YEAR PARTNERSHIP WITH LAMBORGHINI WILL SEE NEW ROGER DUBUIS TIMEPIECES MARRYING SUPERCAR TECHNOLOGY WITH SWISS WATCHMAKING, ALL THE WHILE UNLOCKING UNRIVALLED EXPERIENCES FOR ROGER DUBUIS CONSUMERS ”



Pirelli presence at SIHH 2018

ences with Roger Dubuis' partners. Amongst the special treatments to be enjoyed by the owners of the limited 8-piece Excalibur Spider Pirelli - Double Flying Tourbillon is a two-day VIP all-access program organised by Pirelli at a Formula 1 Grand Prix! As mentioned above, Pirelli is the sole tire brand in Formula 1, which means this VIP treatment expands to opening doors to all the Formula 1 teams. Meanwhile, the buyers of the 88-piece limited edition models will be invited to a range of high-end Pirelli events. As for the Aventador timepieces, buyers will gain special access to the Lamborghini Super Trofeo series - where Roger Dubuis is a main sponsor - which covers 19 races in 10 countries. The five-year partnership with Lamborghini will see new Roger Dubuis timepieces marrying supercar technology with Swiss watchmaking, all the while unlocking unrivalled experiences for Roger Dubuis consumers.

White model of the Excalibur Spider Pirelli - Automatic Skeleton



The new Freak  
Vision from  
Ulysse Nardin



# FREAK

## Out

EXPERIENCE WILD EMOTIONS  
WITH ULYSSE NARDIN

**T**he Freak timepiece from Ulysse Nardin is really one of those rare watches that evoke full-on emotion. As it has been around since 2001 and is being continuously developed, clearly there is much love for the Freak. Avant-garde presentation aside, there is plenty of technology tucked underneath. Among other things, is that the Freak was the first timepiece to harness the use of silicium (French for silicon) when it was first released in 2001.

Over time, Ulysse Nardin proved that silicium is indeed a superior material, and gradually, other haute horlogerie maisons found themselves toying with silicium too. Silicium's advantages include toughness, lightness, anti-magnetism and not requiring any lubrication. As silicium became more dominant in the Swiss luxury watchmaking scene, Ulysse Nardin established itself as the leader in silicium technology.



Case back  
of the  
timepiece



At this year's SIHH, Ulysse Nardin unveiled the Freak Vision. For those new to the Freak, only looking at it through pictures does not do justice to the timepiece. Basically, its movement shows the time, with the hour hand on the barrel, and the Calibre UN-250 movement showing the minute hand. The hour indicator on the Freak Vision is the wide grey rectangle on the blue middle rotating barrel/disc (opposite the Ulysse Nardin logo). Meanwhile, the minute "hand" is the three-legged arch (which actually is not a hand but part of the baguette-shaped movement) with its tip touching the gear teeth. Ulysse Nardin explains that this movement is a flying carousel rotating around its own axis. To take things further, there is no crown on this 45 mm platinum-cased timepiece - adjusting the time is done by pulling the rectangle lever on the crown at 6 o'clock and then rotating the bezel to the desired time.

All Freak variations through the years have all been manually wound timepieces. The Freak Vision breaks the mould as it is the first Freak with an automatic movement. The Freak's automatic movement is made possible thanks to the InnoVision 2, a Freak concept watch showcased last year which had automatic winding capability. Ulysse Nardin calls it the Grinder automatic winding system, which works in a way that the oscillating rotor is linked to a frame containing four arms, double than that found in a conventional automatic winding system. The ingenious system also incorporates a flexible guidance mechanism that drastically limits friction caused by these arms. The fascinating result is that even the slightest movement of the wrist will power the unconventional timepiece; fully wound it stores up to 50 hours of power.

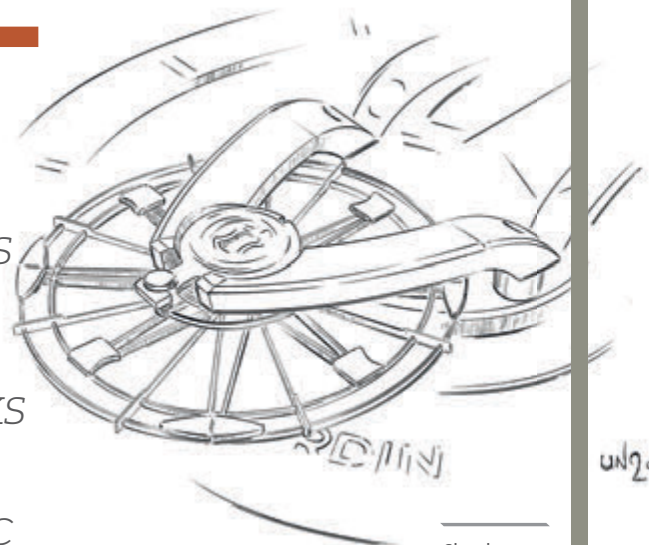
Another technical highlight of the Freak Vision is the Ulysse Nardin Anchor Escapement, a constant force escapement made entirely out of silicium (conventionally made of metal) that has a pallet fork that moves without friction. This allows for positive energy balance that maintains the oscillations of the balance wheel at a constant rate without the influence of torque variation from the mainspring.

To sum up, the Freak Vision epitomises what Ulysse Nardin stands for: freedom to innovate and the desire to be different. As mentioned above, Ulysse Nardin is the leader in harnessing silicium for movements. This material is essential for the Freak Vision as its huge balance wheel, gear train, and even the escapement, is made of silicium, a material now used in other luxury timepieces thanks to Ulysse Nardin.



Ulysse Nardin introduces a shockingly innovative timepiece - the Freak Vision

“ ALL FREAK VARIATIONS THROUGH THE YEARS HAVE ALL BEEN MANUALLY WOUND TIMEPIECES. THE FREAK VISION BREAKS THE MOULD AS IT IS THE FIRST FREAK WITH AN AUTOMATIC MOVEMENT ”



Sketch rendering of the watch's Anchor Escapement

Dial of the  
Fiftysix®  
Complete  
Calendar



# A NEW Generation

VACHERON CONSTANTIN'S  
STYLE AND HERITAGE DIRECTOR  
INTRODUCES THE FIFTYSIX®  
COLLECTION

Christian Selmoni was recently appointed to Style and Heritage Director of Vacheron Constantin, from previously being the brand's Artistic Director. As Style Director, he is working together with the creation design team studio to create new pieces. Meanwhile, as Heritage Director, his duties are to showcase, demonstrate and put a spotlight on the 263-year history of Vacheron Constantin. One of the ways they're doing this is by being active in social media through the @Hourlounge Instagram account. "Vacheron Constantin is the benchmark of classical fine watchmaking," explained Christian, "For me it's really important that our new creations are linked to our heritage and bring to life different levels of elements from the past."

It would be difficult to define one typical style of Vacheron Constantin, as it offers timepieces for both men and women, produces high complications, decorative models, and



Fiftysix®  
Day-Date in  
pink gold





Fifty-six®  
Day-Date with  
power reserve  
indicator



Back of the  
self-winding  
Calibre 2460  
QCL\_1

Transparent case  
back of the Fifty-six®  
Self-Winding pink  
gold model



sports watches. Christian sums it up by mentioning elegance, refinement, balance, sophistication, and a bit of understatement with a little twist in the designs.

During SIHH this year, Vacheron Constantin launched several powerhouse pieces in the realm of grand complications, Métiers d'Art, and its Overseas and Traditionnelle collections. However, the star of the show was the new Fifty-six® collection. Christian explained that the Fifty-six® collection was created to address a new clientele, one that is not yet aware of the brand. Vacheron Constantin is leveraging the Fifty-six® collection as an entryway to its rich world of watches.

The Fifty-six® is a modern interpretation of the iconic reference 6073, launched in 1956. The most striking feature of the 6073 is that its lugs are appropriately shaped like each branch of a Maltese Cross – Vacheron Constantin's logo. And it is this feature that is also subtly present in the Fifty-six® collection. Another design element from the 6073 is the front sapphire crystal rising above the bezel. Historically made from Plexiglas or mineral glass, it is now made of sapphire, a far more scratch-resistant material, while preserving the retro-modern look. Meanwhile, one of the collection's distinguishing characteristics lies in the appearance of its sector-type dial. While the chapter ring, punctuated by alternating Arabic numerals and baton-type hour-markers, channels its 1950s inspiration, the presence on the surface of two subtle tones achieved by finishing effects lends an additional touch of elegance and sophistication. The play of light across the dial gives it depth and a stronger personality. Fifty-six® timepieces have transparent case backs that provide a chance to admire the movement finishing – Côtes de Genève, circular graining and snailing – as well as the new oscillating weight designed for this collection. This polished and satin-brushed 22-carat openworked

“

THE FIFTYSIX® IS A MODERN INTERPRETATION OF THE ICONIC REFERENCE 6073, LAUNCHED IN 1956. THE MOST STRIKING FEATURE OF THE 6073 IS THAT ITS LUGS ARE APPROPRIATELY SHAPED LIKE EACH BRANCH OF A MALTESE CROSS – VACHERON CONSTANTIN'S LOGO”

rotor, bears a Maltese Cross appliqué and frosted-snailed finishing.

The Fifty-six® comes in three variants: with date, day-date and power reserve indicator, and a complete calendar with moon phase – all of which are housed in a 40 mm diameter case either in steel or pink gold. The date model is powered by the new mechanical self-winding movement, Calibre 1326, with a 48-hour power reserve. The Fifty-six® Day-Date with power reserve indicator is powered by the self-winding Calibre 2475 SC/2. The day of the week indication is visible at 9 o'clock, the date at 3 o'clock and the power-reserve (up to 40 hours) at 6 o'clock. The Fifty-six® Complete Calendar, with its indications of the day of the week, date, month and moon phase, is driven by the self-winding Calibre 2460 QCL/1 with a 40-hour power reserve. Due to its precision construction, the moon phase function needs adjusting only once every 122 years. This variant's dial has two apertures at 12 o'clock, indicating the month and the day of the week. The date is displayed by a central gold hand, while the moon disc at 6 o'clock features a blue night sky and 18-carat gold moons.

Asked why Vacheron Constantin chose the 1950s as inspiration, Christian said “We are living in a digital world, surrounded by technology. We want to strike a balance with analogue objects. This trend is not just in the watchmaking world but also prevalent in the fashion world today. Also, this era represents an era of optimism. Optimism that this current generation needs.”



## HEIGHTENED WATER RESISTANCE

**Breitling**  
Superocean  
Heritage II 42

**Tudor Heritage**  
Black Bay

**Ulysse Nardin**  
Diver Chronograph







# Elements of Time

WITH THE ADVANCEMENTS IN WATCHMAKING TECHNOLOGY, TODAY'S TIMEPIECES ARE EQUIPPED WITH A MYRIAD OF FEATURES THAT GREATLY REINFORCE THEIR STRENGTH AND PERFORMANCE, WHILE ALSO LENDING THEM ADDITIONAL VALUE AND APPEAL





**AVIATION TOOL**

**Breitling  
Navitimer  
Rattrapante**

**Bell & Ross  
BR 03 Rafale**



## MEASURE OF SPEED

Chopard  
Mille Miglia GTS

Hublot  
Big Bang  
Unico Ferrari







**PRECISIONAL  
STRENGTH**

**Jaeger-LeCoultre  
Master Compressor  
Extreme Lab 2**

**IWC Big Pilot**

**Jaeger-LeCoultre  
Geophysic®**

Photographer:  
Iswanto Soerjanto  
Art Directors:  
Noni Soeparman  
Astri Lusiana







# BASELWORLD

*22 – 27 March 2018  
Basel – Switzerland*

## Witness the **Dawn of Trends**

Be there when the world's most important watch and jewellery brands present their latest innovations and creations. March 22 marks the start of six days during which the foremost watch and jewellery brands convene in Basel to unveil a new cycle of

trends that will capture the world's attention in 2018. Only Baselworld brings together the most prestigious brands, the most influential media and world-class buyers. Come and experience first-hand tomorrow's trends. Baselworld: the Show of world premieres!



# BASELWORLD

Be there when the world's most important watch and  
jewellery brands present their latest innovations and creations.

BASELWORLD: THE PREMIERE SHOW

*22 – 27 March 2018*





Hamilton Watch Company in Lancaster, founded in 1892



Admiral E. Byrd pocket watch for Antarctica Expedition 1928-1930

# POWER of Invention

HAMILTON FORGES ON WITH  
ITS UNIQUE DUAL APPROACH  
TO FINE WATCHMAKING

The only brand to combine the American Spirit with Swiss Precision, Hamilton has been a true pioneer since 1892. Founded in Lancaster, Pennsylvania, the manufacture has not only successfully bridged two different worlds, it has also continuously excelled at crafting remarkably precise timepieces.

## 1912-1943

Even in its early years, Hamilton prided itself in its capability to manufacture highly accurate timepieces. This was particularly important in the railroad industry, as flawed timing resulted in countless accidents. The brand supplied railroads with precise timekeepers and its pocket watches earned the moniker, "Watch of Railroad Accuracy".

In 1914, the company became a watch supplier to the US Armed Forces. A great feat in itself, this was followed up by another accomplishment in 1918, when a Hamilton aeronautical watch accompanied the first American airmail postal service between Washington and New York. This marked the early beginnings of the brand's foray into aviation watches. Ten years later, Admiral E. Byrd, a renowned Arctic explorer, brought a Hamilton watch along for his Antarctica Expedition in 1928. The Admiral also used a Hamilton watch on his first flight to the North Pole in 1926.

Inextricably part of American history, Hamilton put a stop to its commercial production in 1942 to concentrate on creating one million reliable and accurate timepieces for the US Armed Forces during World War II. This included more than 10,000 ma-



rine chronometers, developed with modern manufacturing, and used as vital naval equipment for calculating longitude and plotting location and direction. The only watch company with the capacity to provide this invaluable support, Hamilton was presented with a US Army-Navy "E" Award for excellence in the production of military equipment in 1943.

## 1951-1970

Apart from its achievements in quality watch creation, Hamilton also made its first appearance on the silver screen in the Oscar-nominated movie, "The Frogmen". This initial undertaking will lead the brand to more Hollywood involvement through the years.

In 1957, the manufacture unveiled the world's first electric watch, the Ventura, which was developed over the course of 10 years. A revolutionary timepiece equipped with advanced technology and exceptional design, the Ventura will go on to become one of the brand's consistent bestsellers for over 50 years.

Hamilton enjoyed more onscreen success in the 60s, with Elvis Presley wearing the Ventura in his movie, "Blue Hawaii" in 1961, and Stanley Kubrick commissioning unique timepieces for his futuristic film, "2001: A Space Odyssey" in 1966. The brand used Kubrick's vision and aesthetic as inspiration in creating a modern wristwatch and desk clock for the project.

In 1970, Hamilton introduced yet another pioneer invention – the Pulsar – the world's first LED digital watch.



B34 Frogman, 1943



Pilots receiving Hamilton watches on the very first U.S. Airmail flight to Washington, D.C., 1918

## Racing TIME... on the highways of the sky!



Boeing mail plane flying the transcontinental air mail, express and passenger route over the Rocky Mountains.

**B**UFFETED by blustery gusts . . . blinded by swirls of white from snow-filled skies . . . the air mail man flies on. There is a port to be made—and made *on time*.

And so Hamilton, the "Watch of Railroad Accuracy" is finding its way into the pockets and around the wrists of the men who guide the mail planes of America.

A Hamilton was with Commander Byrd on his flight to the North Pole in 1926; Hamiltons—sixty of them—are timing his present Antarctic Expedition. Hamiltons clocked the epochal flight of Lieutenants Hegenberger and Maitland from San Francisco to Honolulu.

Let us send you a copy of "The Time-keeper," showing and describing all Hamiltons. Hamilton Watch Company, 882 Columbia Avenue, Lancaster, Pa., U. S. A.



Harold T. Lewis, Air Mail Pilot, who, in his more than 3000 hours of flying, has relied on his Hamilton.



Above—The engraved "Cushion." Gracious in line, with a welcome yet simple richness of appearance. In filled or 14k filled green or white gold. From \$52 to \$77.

Below—The "Rittenhouse." A sturdy, thin pocket model of harmonious design and dignity. Available only in 14k filled green or white gold, from \$70 to \$120.

**Hamilton**  
THE WATCH OF  
Railroad Accuracy

Hamilton advertisement from the 1920s





Hamilton Chronograph B Vintage watch, 1968

## 1974-1990

In a strategic move four years after the introduction of the Pulsar, Hamilton joined the Swatch Group, the largest watch manufacturer and distributor in the world. This prompted a flurry of activity in the manufacture, including the revival of some classic Hamilton designs from the 20s to the 60s.

In the 90s, Hamilton's relationship with Hollywood intensified. A number of the brand's watches starred in some of the most successful movies of the period: "Men in Black", "Lethal Weapon 4", and "The Talented Mr. Ripley".

## 2003-2007

The new millennium ushered in a significant change for Hamilton, as it moved its production and headquarters from the United States to Switzerland. From that time onwards, Hamilton watches have been exclusively made in Switzerland.

In 2005, Hamilton took to the skies once again with leading aerobatic pilot, Nicolas Ivanoff. Since then, the brand has been strongly involved in aerobatics and key air shows including the Red Bull Air Races and the Swiss Aerobatic Association.



Ventura Skeleton for the line's 60th anniversary



Fiftieth anniversary model of the Ventura, 2007

To celebrate the brand's relationship with cinema, Hamilton spearheaded the Hamilton Behind the Camera Awards in 2006. Held in Hollywood and China, the special event puts the spotlight on behind-the-scenes individuals whose efforts are integral to film completion.

Fifty years after the birth of the Ventura, two new editions were unveiled in 2007. Merging modern technology with vintage appeal, the revamped Ventura was offered in a battery-powered model, as well as an automatic version.

## 2014-PRESENT

Through the years, Hamilton has been featured in more than 450 movies, including the fifth instalment of the "Die Hard" franchise, "A Good Day to Die Hard" in 2013. In 2014, two Hamilton watches graced the Christopher Nolan film, "Interstellar". Lead character, Cooper (played by Matthew McConaughey), wore a Hamilton Khaki Pilot Day Date, while his daughter, Murph



Ventura Chrono used in "Men in Black"





Hamilton Khaki Pilot Day Date featured in the 2014 movie, "Interstellar"



Khaki X-Wind Day Date

(played by Jessica Chastain), sported a customised piece named the Hamilton Khaki Special Edition Interstellar. Two years later, the prolific watchmaker donned the wrists of the main characters in "Independence Day: Resurgence".

Apart from its cinematic accomplishments, Hamilton has also persevered in the creation of iconic collections. This includes the classic Jazzmaster family, as well as the more rugged Khaki Field line. Inspired by musical harmonies that contain exquisite variations on a theme, the Jazzmaster has a timeless elegance which is appealing to watch enthusiasts. The Jazzmaster Gent Quartz, for example, is a modern take on a classic watch. Tastefully designed, the timepiece is crafted of stainless steel and bears a minimalist black dial with the addition of a date counter. The Khaki Field Auto 40 mm, on the other hand, is ideal for the intrepid outdoorsman. A bold dial features large numerals for easy legibility, while the exclusive H-10 movement affords the timepiece 80 hours of power. The sturdy stainless steel case provides water resistance of up to 100 metres.



The sleek, classic lines of the Jazzmaster Gent Quartz



Jazzmaster Gent Quartz



Khaki X-Wind  
Auto Chrono,  
2017



In 2017, Hamilton presented the world with the Intra-Matic 68 Auto Chrono, inspired by the historical Chronograph B of 1968. The latter was renowned and well-loved by watch connoisseurs for its “reverse panda” face dial, which featured two white subdials on a black background. The updated version retains the “reverse panda” face and the overall black and white theme, however, the new timepiece comes in a larger 42 mm case, with its hour and minute hands coated with Super-LumiNova® for greater legibility. Limited to 1,968 – a nod to the date of the original’s creation – the Intra-Matic 68 Auto Chrono is a watch that combines Hamilton’s storied past with its bright future.

In the same year, the brand released a new interpretation of its iconic X-Wind collection, the Khaki X-Wind Auto Chrono. Equipped with one of the world’s first drift angle calculator in a watch, this novel offering enables pilots to accurately calculate and record the crosswinds they will encounter on their planned journey. Powered by the Hamilton calibre H-21 with a 60-hour power reserve, the Khaki X-Wind Auto Chrono was unveiled together with the Khaki X-Wind Day Date. With a strong design available in three steel or black PVD-coated options, this timepiece features an orange 24-hour scale and the Khaki X-Wind’s characteristic crowns. The H-30 au-



Khaki Field Auto 40 mm

tomatic movement provides it with a substantial 80-hour power reserve.

The Ventura was another watch that received an update in 2017 for its 60th anniversary. Aesthetically, the watches retained



Khaki X-Wind Auto Chrono

the major design codes of the original: the distinctive shield case shape, the elegant dots for numerals, and the electricity symbol in the middle of the dial. That is except for the Hamilton Ventura Skeleton, with its geometrical crisscross dial revealing the H-10-S automatic skeletonised movement.

This year, Hamilton unveils a new iteration of the Khaki X-Wind Auto Chrono. Available in just 1,918 individually numbered pieces, the 2018 limited edition watch celebrates Hamilton’s 100<sup>th</sup> anniversary in aviation (100 Years of Timing the Skies). The commemorative timepiece measures 45 mm and is packed with a bevy of aviation features for pilots. At its heart beats the H-21-Si, the first Hamilton chronograph movement with a silicon hairspring.

The limited edition Khaki X-Wind Auto Chrono is but one of the brand’s releases for 2018. And if this is just a glimpse of what the brand has in store, then Hamilton watch fans and enthusiasts will surely be in for a treat as the brand gears up for more innovations and presentations throughout the year. What more can one expect from such a prolific manufacture? The answer to that is nothing short of extraordinary.





# HIGH LIVING







Express your true self with Valentino this Spring and Summer

# MODE

## On

VALENTINO'S PIERPAOLO PICCIOLI MAKES THE ORDINARY EXTRAORDINARY



Valentino is not a new name to fashion. However, in the hands of its Creative Director, the Maison paves the way for a new fashion interpretation. One that transcends existing trends and norms. Welcome to Valentino's men's and women's Spring/Summer 2018 collections.

### SHE'S IN FASHION

Fashion is something that touches the heart of every soul. It is supposed to be fun, inspiring; it should enrich people's imagination and bring fantasy to life. The Creative Director of Maison Valentino, Pierpaolo Piccioli, has once again made this happen. Inspired by the perspective of the Apollo moon landing, his women's Spring/Summer 2018 collection takes glamour to a whole new level. Normal becomes imaginative.



Shapes, colours and matter alter to astonish without betraying their function. Each piece may look casual, but if you pay attention to the details, each is infused with feminine power, thanks to the sparkling palettes, attractive embroidery and artful layering. The blouson, the cargo trousers, the tank tops, the Bermuda, the shirt, the dress: these are elements of a wardrobe reread with a metaphorical interpretation. Volumes that liquefy, hems that shorten, details that mutate. PVC reveals and shines.

Through this collection, fashion goes back to being a free fantasy exercise, something every woman will be receptive to. Everything is provocative, colourful and rich in texture. This is further enhanced by the colour palette which includes reds, greens and pastels.

A mix of athleticism and glam, this delightful collection makes utilitarian items marvelous, like the sweet silk dresses which come in sporty silhouettes. Boxy leather jackets and casual cut-out dresses are perfect for urban women. An addition to perfection are handbags adorned with the brand name.



## STREETWEAR MEETS HIGH FASHION

Spring and summer bring joy and comfort to everyone's life. The sun is shining and the birds are singing. It's a good time to do outdoor sports. Strongly influenced by streetwear and sports, Valentino takes a sporty detour for its men's Spring/Summer 2018 offerings. The brand breathes new air into sportswear luxury: a statement of self-expression, a harmony between community and individuality, a perfect combination of fine craftsmanship and personalised details.

This collection is a wardrobe of archetypes, made individual by diversions, dissembling's and vacillations. The anorak, the perfecto, the track jacket, the chinos, the shirt and the running shoe. Volumes adapt to the body.

Nylon, cotton, acetate and cashmere are the essential materials used in the collection, while high collars and solid colours are the obvious elements. Valentino's man gravitates towards sporty jackets, relaxed trousers, and oversized shirts. He is ready to stroll the streets with confidence, exuding cool wit and comfort.

### VALENTINO

Plaza Indonesia Level 1 #058  
 Jl MH Thamrin Kav 28 - 30, Jakarta Pusat  
 Phone: 021 2992 1970  
 Operating Hours: 10 am to 10 pm  
 Monday to Sunday







Details of the exhibit and boutique exterior

# HAUTE Celebration

CHANEL UNVEILED THE  
THIRD INSTALLMENT OF  
THE MADEMOISELLE PRIVÉ  
EXHIBITION IN HONG KONG

**D**istinguished guests and CHANEL ambassadors, Pharrell Williams, Caroline de Maigret, Alma Jodorowsky, and Park Shin Hye, were seen among the crowd at the opening of the Mademoiselle Privé exhibition held at PMQ in Hong Kong last January. This prestigious soirée also saw the presence of local creative talents such as actress Angela Yuen, and singers Khalil Fong and Joey Yung. It was indeed an evening full of stars. They came to immerse themselves in the dazzling history of CHANEL through Haute Couture designs, CHANEL N° 5 and High Jewellery – the three cultural pillars established by Gabrielle Chanel.

Hong Kong was chosen as the third stop after London and Seoul. The exhibition was open to the public until February 10, 2018. The Mademoiselle Privé exhibition has





been continuously created to illuminate the innovative vision and creative momentum of founder Gabrielle Chanel, now championed by the House's Artistic Director Karl Lagerfeld.

### WELCOME TO CHANEL

The venue was transformed into a piece of Paris. It was a charming space where visitors could find themselves in front of a blackened replica of the famous CHANEL façade at 31 rue Cambon, while the windows showcased a unique selection of archival looks from the last three decades, all designed by Karl Lagerfeld. The inspired theme carried over to the windows of the CHANEL Prince's building flagship and the CHANEL boutiques on Canton Road and Lee Garden where a spotlight was cast on CHANEL's iconic suit, first introduced by Gabrielle Chanel in the 1950s. Here, people were able to read a text printed in the



form of two quotes, "I wanted to give women suits that were easy to wear and which, at the same time, would accentuate their femininity," said Gabrielle Chanel, while Karl Lagerfeld remarked, "The CHANEL jacket is one of the symbols that define the CHANEL style."

Inside, guests were invited to enjoy the contemporary urban 'garden' awash in punchy shades of red. This red garden was set up like a labyrinth with a path that circled its way around totems, a 3D imagining of a CHANEL archival abstract textile pattern by Russian artist Ilia Zdanevitch, a close friend and collaborator of Gabrielle Chanel. Two custom works by local artists, a pearl installation by Another Mountain Man and a participatory work realised by SK Lam inspired by the CHANEL camellia, were also on display especially for this Hong Kong exhibition.



After the red garden, guests were led to a striking white box with the key to the iconic CHANEL N° 5 fragrance inside. "I wanted to give women a scent, but one that was artificial. I mean really artificial, like a dress; manufactured. I am a dressmaking craftswoman. I don't want rose or lily of the valley; I want a scent that is a compound," Gabrielle Chanel stated. This is the fragrance that has carried her timeless vision through to today.

Up a flight of stairs covered in motifs inspired by Gabrielle Chanel's beloved Coromandel screens (antique Chinese lacquered screens) and accented by a red neon light effect, visitors arrived into the world of CHANEL's Haute Couture. The fitting and sewing processes were presented in a room filled with the sounds of the ateliers, echoed in the dress toiles hanging in the exhibition space.



The next stop was the striking display of a re-edition of the famous 1932 collection, 'Bijoux de Diamants'. A final word from Karl Lagerfeld ended the visit with a screening of one of his short movies, "Visite Nocturne", in which he pays homage to the founder, here played by actress Geraldine Chaplin.

What a journey! Stay tuned for further event details and catch the next Mademoiselle Privé exhibition in another fabulous city of the world.

1. Chelsea Islan
2. Pharrell Williams took part in the exhibition
3. Park Shin Hye
4. Caroline De Maigret
5. Alma Jodorowsky
6. Ann Hsu





# COOL Colours

BERLUTI PRESENTS  
AN INSPIRED  
COLLECTION FOR  
SPRING/SUMMER 2018

**B**erluti Creative Director, Haider Ackermann, never fails to amaze the public with his creations. This time, he presents a fresh collection, which tells the story of a reinvented palette, composed of works of art where traditional summer hues are seen through a modern and dynamic point of view.

Featuring a perfect blend of colours and delicate artistry, this collection has become the go-to style choice for modern men in the world. And, women can borrow the clothes too! The perfecto has been refined thanks to an icy blue or milky white bonded leather lining. The bomber jacket made of Ottoman leather plays an important role in this offering. The light cashmere coats are seen in a variety of cool colours, which are definitely perfect for summer. Moreover, silk punctuates all the silhouettes, which can be seen in the jersey silk tank top, the lining of a jogging pant or the silky band on a trouser. Here, Ackermann amazingly plays with the codes of the materials and twists these into inspired casual pieces.

In the accessories department, the Colombia-born designer presents a tote bag in double-faced leather –black on the outside and dove-grey on the inside. The day bag can be worn as well on the weekends thanks to its adaptable volume. In reference to the emblematic Alessandro Oxford shoe, the House has crafted a soft nubuck flat slipper made of one single piece of leather, while boots feature a lower cut than those seen in previous seasons.

Berluti's latest collection is an ode to American-German photographer Erwin Blumenfeld's experimental techniques. He was famous for his experimental double-exposures and reworking of colours until they morphed into abstract delights.





Berluti  
Paris





Prints and patterns exude warmth and joie de vivre suitable for spring and summer

# TROPICAL Cool

WELCOME THE WARMER MONTHS WITH FENDI'S SPRING/SUMMER 2018 COLLECTION





Italian Futurism takes on a vacation vibe in FENDI's Spring/Summer 2018 Collection. Caribbean colours and flavours dominate the highly graphic and playful offerings. This is a line that is perfect for tropical getaways or upbeat city living during the warmer months, with its choice of materials and details that add an extra punch.

Think bowling shirts that are transformed into organza blouses, and rugby polos or cable knits worn tastefully over candy striped knickers and bras. The figure is highlighted with denim coats and cool poplin tops that reveal shoulders and scrunch at the hip, while striped silk denim and pinstriped cotton skirts hug the waist high. These silhouettes receive a wealth of other details that make all the difference.

Bling is subdued with nude sequins, delicate fern leaf broderie anglaise showcase high craftsmanship, and the tropical theme continues with beaded organza philodendron and palm leaves as well as floral leather marquetry. Cool colours permeate through the different pieces and are reminiscent of summer



2

3

4

1. The Peekaboo bag in plaid
2. The Kan I bag comes in raffia material with trimmed fringes
3. The Runaway Shopper in transparent tartan mesh with rounded rattan handles
4. The new mini bucket bag Mon Trésor in iconic FF pattern

– shades of ocean blue, along with seafoam green, coral pink and sand. Footwear include pointed mesh flats and pumps with tartan beading, surf straps and a rattan heel, whilst stocking boots collage the double F logo with futurist florals.

But the brand does not stop there. FENDI knows there's nothing like a statement bag to complete any outfit. And it delivers just that with its latest offering of envy-inducing handbags. Here, FENDI does not regress. Instead, the brand offers a lush selection of iconic bags that exude a more laidback vibe, without sacrificing luxurious appeal. The Mon Trésor, a mini bucket bag, graces the runway for the

first time. Crafted of supple exotic leather and adorned with metallic pearls, it is the perfect accessory for any occasion.

Reflecting the cool Caribbean appeal of FENDI's Spring/Summer 2018 offerings, the new Runaway tote is interpreted in transparent tartan mesh with rounded rattan handles. Whether used for leisurely weekend strolls in the city or as a functional tote while basking in the warmth of the sun on a tropical location, the Runaway is roomy and oh-so-chic!

The Peekaboo also receives a refreshing tartan makeover, while the Kan I F bag takes the summer feel up a notch with raffia fringes. Apart from the bags' original handles, you can add extra allure to the pieces with Leafy suede Strap You handles as well as delightful Monkey, banana and Bao-bug logo charms.





# *FREEDOM* in Fashion

REDALENTINO EMBRACES  
MULTIPLICITY IN ITS SPRING/  
SUMMER 2018 COLLECTION

**T**he name Valentino has been a familiar and consistent style staple in the world of haute couture for almost 60 years, with cultural and silver screen icons such as Sophia Loren, Elizabeth Taylor, Audrey Hepburn and Jacqueline Onassis donning its designs.

In 2003, with the aim of dressing a new generation of fearless fashionistas, the luxury brand established REDValentino, a sister line that aimed at combining high fashion and street style to present a fresh and edgy look.





Fifteen years on, REDValentino remains true to its moniker - Romantic Eccentric Dress - by kicking off the new year with a vibrant burst of colour and feminine flourish in its Spring/Summer 2018 Collection.

Described by the brand as “the joy of multiplicity,” the collection was designed by REDValentino Creative Director Pierpaolo Piccioli himself and attempts to break the confines of so-called industry expectations by adhering to “no structures, no barriers.”

It’s all about “freedom and guts and a multicultural spin to gentleness,” the brand adds. Even in the face of such a bold statement, REDValentino does not disappoint, presenting a line of billowing skirts, dresses and trousers that are vivacious in colour and print. The result is eclectic, a spirited mosaic held together by a common thread of urban whimsy and a modernised homage to Valentino’s reign in the 1960s and ’70s.

Some designs feature geometric motifs of rectangles and zigzag lines. Others, inspired by bandana prints, are intricate and bold without distracting from the airy and almost delicate silhouettes.

These patterns, brought to life in swirling hues of black, blue, red and cream, are also visible



in the collection’s offerings of crop tops, sheer maxi skirts (with built-in shorts), backless tops and jumpsuits.

Each design, the brand explains, is “grounded yet dreamy” in conveying a “multicultural spirit with a cosmopolitan stance.”

The collection’s array of accessories, meanwhile, bring “a sense of craft and adventure.” The wooden platforms, for example, come in bright earth tones and are embellished with studs and braided, leather straps. Fringed leather bags bear the same lively patterns found throughout the line to add a complementary boho-chic flavour.

Each piece in REDValentino’s Spring/Summer 2018 Collection actively adds to the line’s narrative of embracing freedom and multiculturalism in a rapid-moving world. It is a bold statement to make in today’s globally divisive climate, but one that aptly reflects the brand’s core DNA.

**RED VALENTINO**

Plaza Indonesia Level 1 #152  
 Jl MH Thamrin Kav 28 - 30, Jakarta Pusat  
 Phone: 021 2992 1975  
 Operating Hours: 10 am to 10 pm  
 Monday to Sunday





# STYLE

## Juxtaposition

TORY BURCH'S LATEST COLLECTION IS A KALEIDOSCOPE OF FASHION AND DESIGN

American designer Tory Burch introduced the Spring/Summer 2018 Collection of her eponymous brand in an enchanting showcase under the blue Manhattan skies of New York.

Held in the Arthur Ross Terrace and Garden of the Cooper Hewitt Smithsonian Design Museum, the runway show still conveyed that boho-chic flair the Tory Burch label is widely known for. But this season, a kaleidoscope of strong, contrasting colours and striking motifs gives Burch's signature vintage-inspired aesthetic a modern, metropolitan edge.





Her inspiration for the seasonal makeover was British interior designer David Nightingale Hicks, who rose to fame in the late 1960s with his fresh blend of contemporary and classical décor and unrestrained use of colours. His creations were used and sought after by royalty, Hollywood film studios and fashion moguls, and later copied by both designers and furniture manufacturers.

Commenting on Hicks' influence on her label's latest collection, Burch says: "Bold. Audacious. Brilliant. David Hicks redefined interiors. His fearless and witty take on colour and print, and his exquisite attention to detail, have made a lasting impression on me."

Many of the geometric prints appearing on the collection's array of wrap dresses, wide-legged trousers, bohemian caftans and even scarves were taken directly from the famed interior designer's portfolio or inspired by his works.

"For Spring/Summer 2018, we are honoured to work with the legendary designer's original scrapbooks, given to us by his son. Immeasur-



Amber Liu



able thanks to Ashley Hicks for this collaboration," Burch adds.

The line is further brought to life with stripes of various sizes, Moroccan-inspired motifs and even floral patterns that honour Hicks' passion for nature and gardens – which also inspired the setting of the Spring/Summer 2018 Collection's outdoor runway show. The silhouettes, meanwhile, are breezy and relaxed, channeling Tory Burch's iconic bohemian style.

Keeping up with the running theme of blending old and new, urban and rustic, Burch used a mélange of fabrics – from cashmere and soft crepe to draped silk and terry cloth – in an assertive palette of juxtaposing hues. Here, the base colours are soft and understated, such as toffee and crisp white, to create an ideal canvas for vibrant motifs – stripes, florals and right-angled shapes – in mustard yellow, poppy red and tangerine.

The same geometric design concept is applied to the line's range of jewellery, which includes signet rings, cuffs, earrings and pendant necklaces. The offerings of shoes and bags, however, are markedly casual and functional to gently balance the intricacies of the rest of the Spring/Summer 2018 Collection. Fans of the brand can anticipate the collection at Tory Burch boutiques in Indonesia, as well as its newly opened store in Surabaya.

**TORY BURCH**

Tunjungan Plaza IV Upper Ground Level  
 Jl. Basuki Rahmat no. 8 - 12, Surabaya  
 Phone: 031 535 9561  
 Operating Hours: 10 am to 10 pm  
 Monday to Sunday



Emily Blunt





The new Mercedes-Benz E-Class executive saloon

# A CLASS of Its Own

MERCEDES-BENZ INDONESIA  
LAUNCHES LATEST LOCALLY  
BUILT MODEL



**L**uxury automaker Mercedes-Benz has once again propelled Indonesia's car-manufacturing industry into the spotlight with the release of its newest E-Class executive saloon. The 10th generation model, made by the German company's local arm, Mercedes-Benz Indonesia (MBI), is entirely assembled in a plant located in Bogor's Wanaherang Village, West Java.

The new E-Class joins the ranks of the luxury S-Class sedan and high-end sports utility vehicles – GLC, GLS and GLE – as part of a growing number of Mercedes-Benz models to be wholly built in Indonesia. Designed to reflect the manufacturer's philosophy of "sensual purity", the executive saloon boasts a sleek, emotive exterior starting from the elongated bonnet combined with a coupé-esque roof that flows into a

broad-shouldered tail end. This exciting silhouette is further highlighted by the powerfully extended vehicle body – the wheelbase length has been increased by 65 millimetres and the overall length by 43 millimetres. A muscular front, differentiated by a unique design for each line, provides dynamic elegance and a degree of diversity. At the back, broad shoulders above the rear wheel arches give the new E-Class its indisputable strength of character.

Inside, a substantial number of improvements have also been made. Two large displays of 12.3 inches blend into a wide-screen cockpit. Fully digital, the cockpit showcases virtual instruments which allow the driver unhindered access to pertinent information. Depending on the driver's preference, the cockpit instrumentation arrangement



can be customised using three different styles: “Classic”, “Sport” and “Progressive”. In a bid to keep driver distraction to a minimum, the new E-Class’ steering wheel now features touch-sensitive Touch Controls. With an interface similar to that of a smartphone, these controls respond to horizontal or vertical swiping movements, which allows the driver to control the entire infotainment system without taking his hands off the steering wheel. Passengers can similarly control the infotainment system through a Touchpad with Controller in the centre console.

They can do this while sitting comfortably in the spacious interior, equipped with plush, ergonomic seats that are perfectly suitable for long drives. Being stuck in traffic now need not be bothersome with backrests complete with sporty side bolsters and a wide shoulder section for added lateral support. In addition to



providing unparalleled ease, the seats are also fully electric with Memory package and novel electric seat cushion depth adjustment. This package includes improved lumbar support as well as electric head restraint adjustment.

These updates are further enhanced by a plethora of automotive innovations that emphasise safety and comfort for passengers. These include Active Break Assist technology for emergency braking and to warn the driver of possible collisions; an Attention Assist system that warns of the driver's drowsiness or lack of attention; and Parking Pilot with PARKTRONIC allows the vehicle to park itself easily, fully autonomously.

The new locally-assembled E-Class executive saloon is currently available in showrooms across the country.





# START OF the Season

DEBORAH ISKANDAR  
COMMEMORATES THE START  
OF THE 2018 ART FAIR CIRCUIT  
WITH SINGAPORE ART WEEK

**T**he first stop in the art circuit in Asia is always Singapore Art Week, held in January. Most of the galleries that participated in Art Stage this year were regional galleries from Asia and of course the Singapore-based international Opera Gallery. However, Art Stage wasn't the only interesting art venue, as I visited well-curated exhibitions at Gilman Barracks. In fact, many of the Gilman Barracks galleries chose not to participate in Art Stage this year, focusing on their home turf instead. The most notable events at Gilman were held at ShanghART and Chan + Nori Gallery.

Art Stage Singapore 2018 featured established and upcoming artists from Asia and all over the globe. Since currents in the art world are ever-changing, this eventful weekend is always an excellent opportunity to enrich and expand one's art knowledge. This year, the aim of the event was to strengthen the Southeast Asian art market. A departure from the usual gallery showcase was a selling exhibition by the Tiroche De Leon collection. Tiroche de Leon is actually an investment fund, which was established to collect, promote, share, and ultimately sell works in their collection. They have Indonesian artists such as Nyoman Masriadi,

Agus Suwage and Eko Nugroho, among others, in their collection. Masriadi is a Balinese artist who uses influences from his cultural heritage to display various caricatural characters such as soldiers, super heroes, comic figures or athletes. The Tiroche collection had one of his earlier pieces, "Untitled" from 1998. This mixed media artwork depicts a surreal mythological creature with wings and a human face on a multi-coloured background. Rich with motifs, it resembles a grotesque combination of a bestial angel and a human. It was interesting to be able to compare this early work from 1998 with a more recent 2014 work to see how he has expanded and developed.

Gillman Barracks chose to showcase performance art, such as "Transactions of Hollows", a live performance by Melati Suryodarmo at ShanghART. Melati, an Indonesian-born artist based in Germany, features a combination of elements from the physical world and visual art, addressing themes of identity, politics and the relationship between the body and its environment. During her performance, the audience was invited to stay in the space while Melati was shooting arrows across the room.

One of my favourite exhibitions during Art Week was without a doubt Melati's solo exhibition, "Timoribus" at ShanghART, which I thought was a good representation of her multidisciplinary approach to art, since it includes



a wide selection of works and mediums from videography and photography to durational performance. “Timoribus” means “fear” in Latin, and through a highly physical and even absurd performance, Melati examines the feeling of fear in relation to lived reality and personal experiences, compared to the messages conveyed by the mainstream media.

Another artwork which caught my eye at Gillman Barracks was Papermoon Puppet by a former theatre performer and illustrator, Maria Tri Sulistyani, and her visual artist husband, Iwan Effendi. Papermoon Puppet is a unique concept which mixes performance art and world-renowned puppetry traditions from Indonesia, creating works that imaginatively explore questions about society and



identity. Their performance was accompanied by a talk from the creators about the values and way of life of Indonesian people. I appreciated two works in particular, “Pak Wi” (2017), made of acrylic, pencil, leather and wood on canvas, and “Chronicle of Love” (2017), made of pencil and coffee stains on paper. The story of “Pak Wi” is particularly touching as it documents the romance of Pak Wi, who was sent to study in the Soviet Union in the 1960s. As a result of the turbulence and violence in Indonesia, he was unable to return to Indonesia. He promised his fiancée he would not marry, and although he remained in exile for 40 years, he

kept his promise. His fiancée, however, did go on to marry and raise a family. This artwork reflects the poignancy of this true story and their meeting 40 years later.

“Perfect Stranger”, by Singaporean artist Dawn Ng at Chan + Hori Gallery, also attracted my attention, with an installation transforming the gallery into a soft, undulating sea of colour. Initially meant as private messages from a soon-to-be-mother to her unborn daughter, the 48 sheets spread on the floor offered the public an immersive experience. The confessions, questions, poems, lists and jokes appealed to each of us differently, making it a very intimate artwork.

In conclusion, Singapore Art Week 2018 was a promising start for art this year by offering an enriching experience of performance and visual art, from photography to puppets and immersive installations. I am already looking forward to the next art fairs and to what else this year will bring in terms of art and creativity.

1 Melati Suryodarmo, TIMORIBUS, Melati Suryodarmo Solo Exhibition 2018, ShanghART Gallery Singapore

2. Dawn Ng exhibition under Chan + Hori Contemporary Gallery at Gillman Barracks, Perfect Stranger

3. Papermoon Puppet, Pak Wi.

4. I Nyoman Masriadi, UNTITLED, 1998.

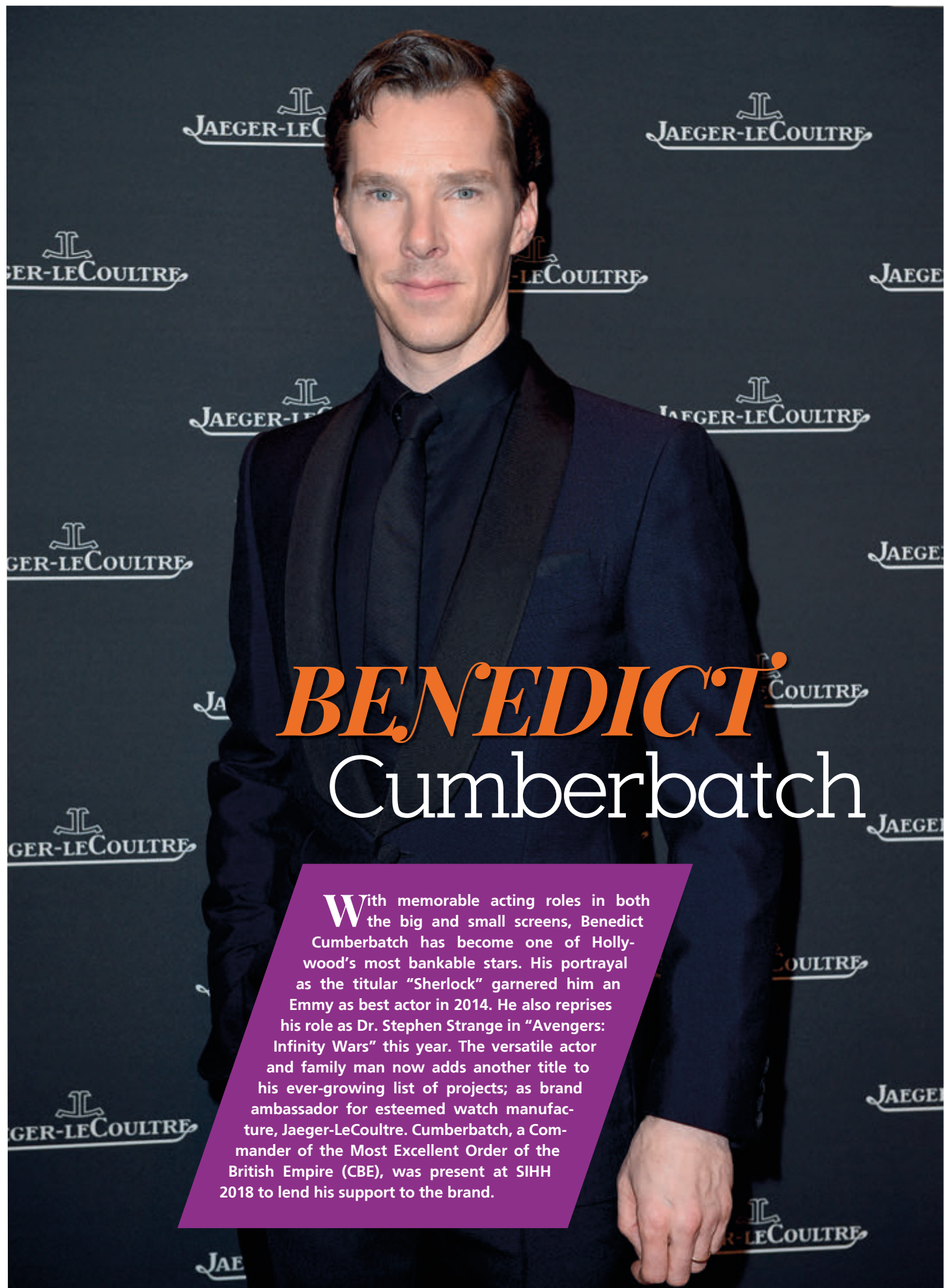
Deborah Iskandar is Principal of ISA Advisory, which advises clients on buying and selling art, and building collections. An expert on Indonesian and international art, she has more than 20 years of experience in Southeast Asia, heading both Sotheby's and Christie's Indonesia during her career before establishing ISA Art Advisory in 2013. She is also the Founder of Indonesian Luxury, the definitive online resource for Indonesians looking to acquire, build and style their luxury homes.

**ISA Art Advisory**

Jl. Wijaya Timur Raya No.12  
Jakarta 12170 Indonesia

tel: +6221 723 3905 e-mail: enquiries@isaartadvisory.com

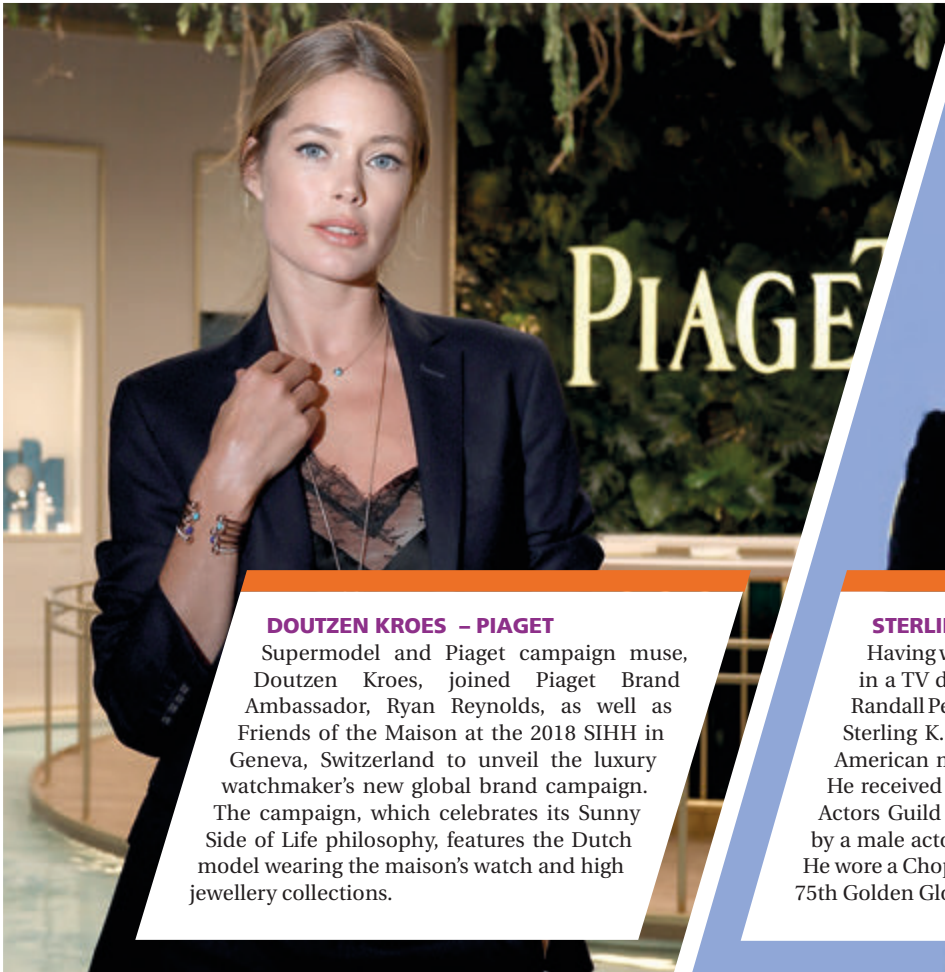




# *BENEDICT* Cumberbatch

With memorable acting roles in both the big and small screens, Benedict Cumberbatch has become one of Hollywood's most bankable stars. His portrayal as the titular "Sherlock" garnered him an Emmy as best actor in 2014. He also reprises his role as Dr. Stephen Strange in "Avengers: Infinity Wars" this year. The versatile actor and family man now adds another title to his ever-growing list of projects; as brand ambassador for esteemed watch manufacturer, Jaeger-LeCoultre. Cumberbatch, a Commander of the Most Excellent Order of the British Empire (CBE), was present at SIHH 2018 to lend his support to the brand.





#### **DOUTZEN KROES – PIAGET**

Supermodel and Piaget campaign muse, Doutzen Kroes, joined Piaget Brand Ambassador, Ryan Reynolds, as well as Friends of the Maison at the 2018 SIHH in Geneva, Switzerland to unveil the luxury watchmaker's new global brand campaign. The campaign, which celebrates its Sunny Side of Life philosophy, features the Dutch model wearing the maison's watch and high jewellery collections.



#### **STERLING K. BROWN – CHOPARD**

Having won a Golden Globe in the best actor in a TV drama category for his portrayal of Randall Pearson on the hit show "This Is Us", Sterling K. Brown is now the first African-American man to receive such an honour. He received a similar nod from the Screen Actors Guild for outstanding performance by a male actor in a drama series this year. He wore a Chopard L.U.C 1937 watch at the 75th Golden Globe Awards.



#### **JUSTIN TIMBERLAKE – CARTIER**

After releasing his latest album "Man of the Woods" to mixed reviews, Justin Timberlake appeared at the NFL Super Bowl 2018 halftime show in high gear. The former NSYNC frontman wowed the crowd with his vocals and upbeat dance moves. What nobody can deny is that the loving father of one and husband to Jessica Biel is truly talented. He was seen at the 75th Golden Globes wearing a Drive de Cartier watch.

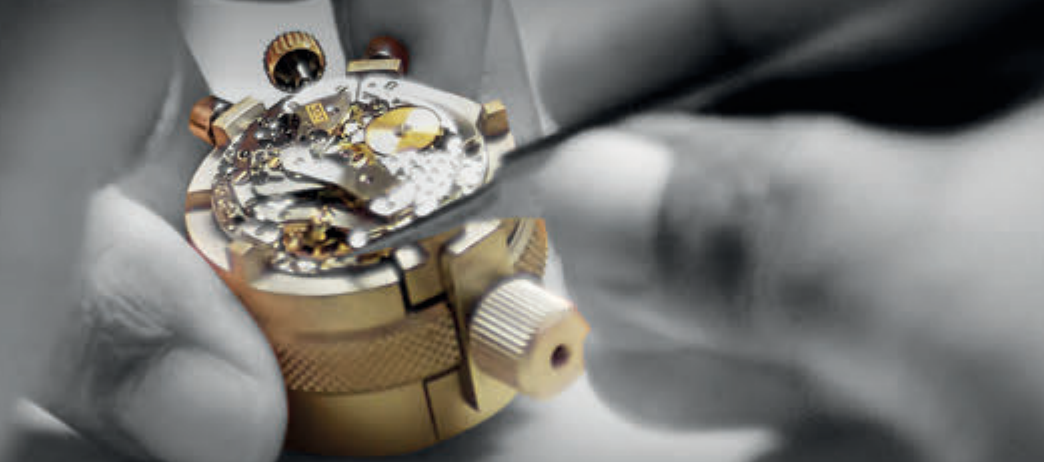


#### **BRADLEY COOPER – IWC**

Bradley Cooper has come a long way from "The Hangover". The debonair actor has since been nominated for a number of Oscars; the first for his leading role in the movie "Silver Linings Playbook", and the second for his supporting role in "American Hustle". Most recently, Cooper was seen at the 2018 SIHH where he happily joined the IWC Schaffhausen family as its new brand ambassador.



# Service Center



## TIMECARE

Menara Sudirman Level 12A Jl. Jend. Sudirman Kav.60, Jakarta 12190  
Tel. +62-21 29272780, Fax +62-21 29272781, timecare@time.co.id

Opening hours: Monday to Friday at 08.30 – 17.30  
Closed on Saturday/Sunday/Public Holiday



The only authorized service center in Indonesia for over twenty of the leading brands in timepieces. Excellent services from the specialists for the impeccable quality using only officially licensed equipment, original spare parts and one year repair guarantee.

## WatchCare CENTRE

**Jakarta :** Grand Indonesia Shopping Town - Jl. MH Thamrin no.1, East Mall, Level 5 #GD2 - 16, 17, Jakarta 10310  
Tel. +62-21 23581344, WA. 0812 19119152, watchcare@time.co.id  
**Surabaya :** Grand City Mall Surabaya - Jl. Gubeng Pojok no.1, Lt.1 Unit 34, Surabaya 60272  
Tel. +62-31 52405825, WA. 0812 19119153, watchcare.surabaya@time.co.id

Opening hours: Everyday at 10:00 - 21:00  
(Last Watch Registration: 20:00) - (Last Watch Collection: 21:00)





# The Time Place

INDONESIA

INDONESIA'S LEADING MAGAZINE FOR TIMEPIECE  
CONNOISSEURS AND ENTHUSIASTS



Enjoy The Time Place Magazine right in the palm of your hand through SCOOP, application available for free download from Google Play and Apple App Store.

## SCOOP



TheTimePlace



TheTimePlace



TheTimePlace